



Campus Master Plan Update

Cross-Team I

Atlanta Metropolitan College

March 4, 2011



Clement & Wynn, LLC in association with
Paulien & Associates
The Sizemore Group
The Jaeger Company



AGENDA:

1. History
2. Goals for Campus Master Plan
3. Campus Character
4. Existing Conditions
 - a) Site
 - b) Buildings
5. Academic & Strategic Objectives
6. Space Needs Analysis – Fall 2010
7. Future Requirements
 - a) Built Space
 - b) Land Use
8. Campus Capacity



HISTORY:

- 1965 - 1972**

BOR authorizes a college for west metropolitan area of Atlanta

- Fall 1974**

Atlanta Jr. College opens with initial enrollment of 504 students

- 1976-1979**

Academic and Library/Admin Bldg. completed

- July 1988**

Name changed to Atlanta Metropolitan College

- 1991 – 2000**

Major Land Acquisitions & Student Center Completed

- 2001 – 2006**

Declining Enrollment

- 2007**

Dr. McGaha becomes president

- 2008 – 2010**

Enrollment Increases to 3000; Academic Sciences Building & Student Center Underway



GOALS for the Master Plan

Perception vs. Reality

Atlanta Metropolitan College is NOT

- Private. . .
- An HBCU. . .
- A technical college. . .
- A last-choice school. . .
- Grade 13.



GOALS for the Master Plan

Perception vs. Reality

Atlanta Metropolitan College IS

A USG Institution. . .

A 2 yr. College... soon to be 4 yr. . .

A School of Choice...

Accessible Academically & Financially...

A Community Partner

A Change Agent



GOALS for the Master Plan

Perception vs. Reality

Atlanta Metropolitan College Offers:

- Quality Academic Programs...
- Dedicated Faculty. . .
- A Variety of Instructional Access. . .
- A True Desire for Student Success...
- Nurturing/Personal Interactions...
- Support for Traditional &
Non-Traditional Students...



GOALS for the Master Plan

- Create More Accurate & Positive Perceptions
- Improve Curb Appeal & Visual Access
- Support Economic Development in the Surrounding Community
- Encourage Student Participation in “College Life”
- Retain the Best Things:
Quality, Character, Intimacy as AMC Grows
- Identify Funding Sources that Ensure Timely Implementation of the Plan

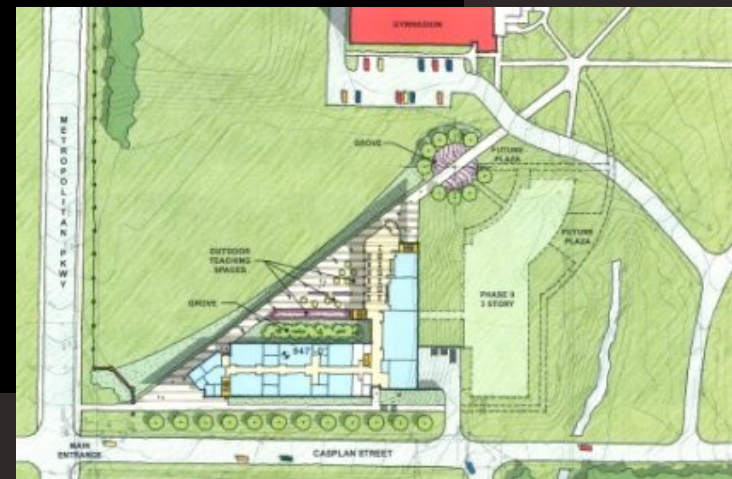
CHARACTER of AMC



What is it Now...?

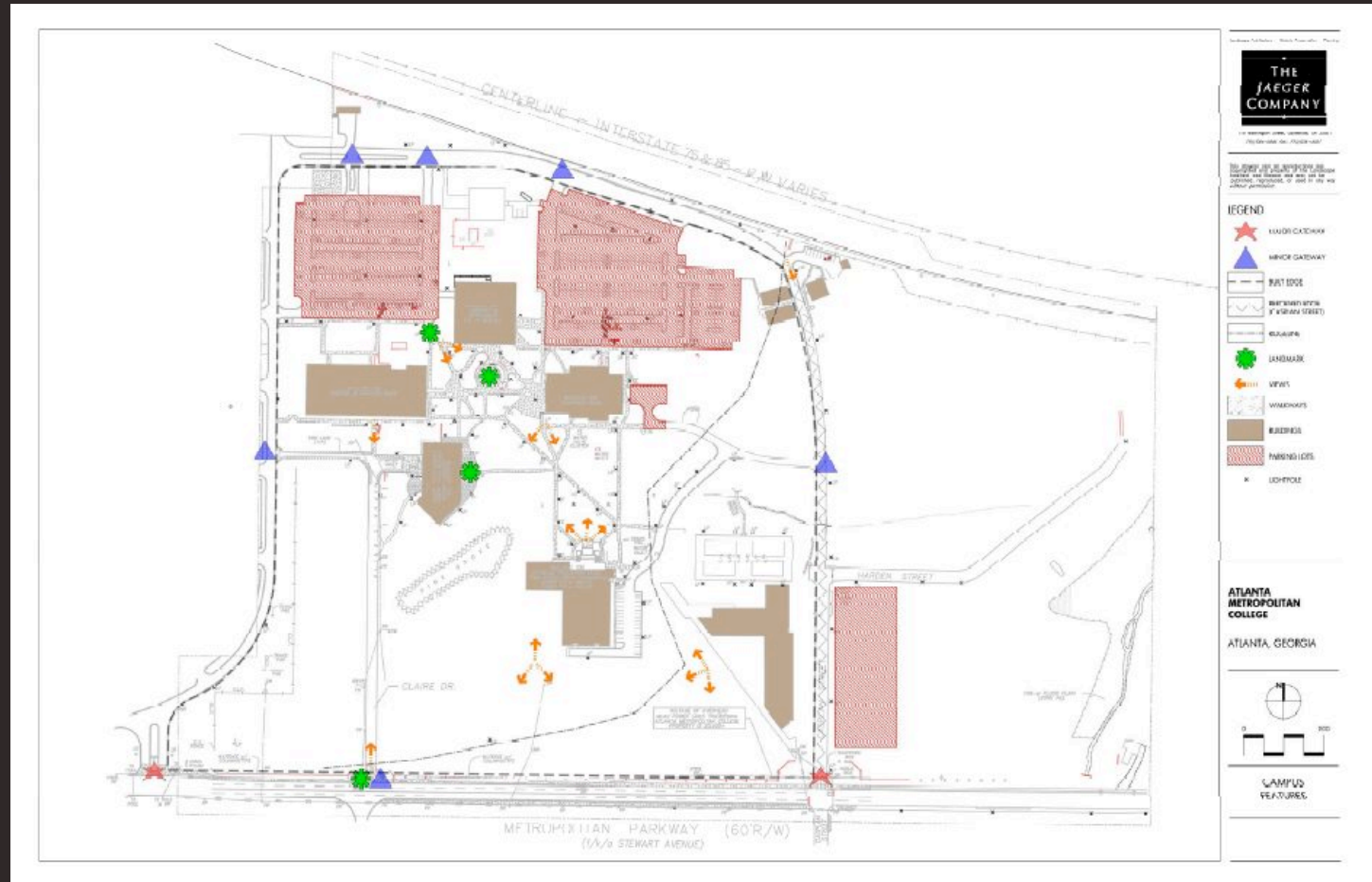


What will it be
in the Future...?



CHARACTER Considerations . . .

Vistas & Views



CHARACTER of AMC Campus



CHARACTER of AMC Buildings



CHARACTER of AMC Buildings



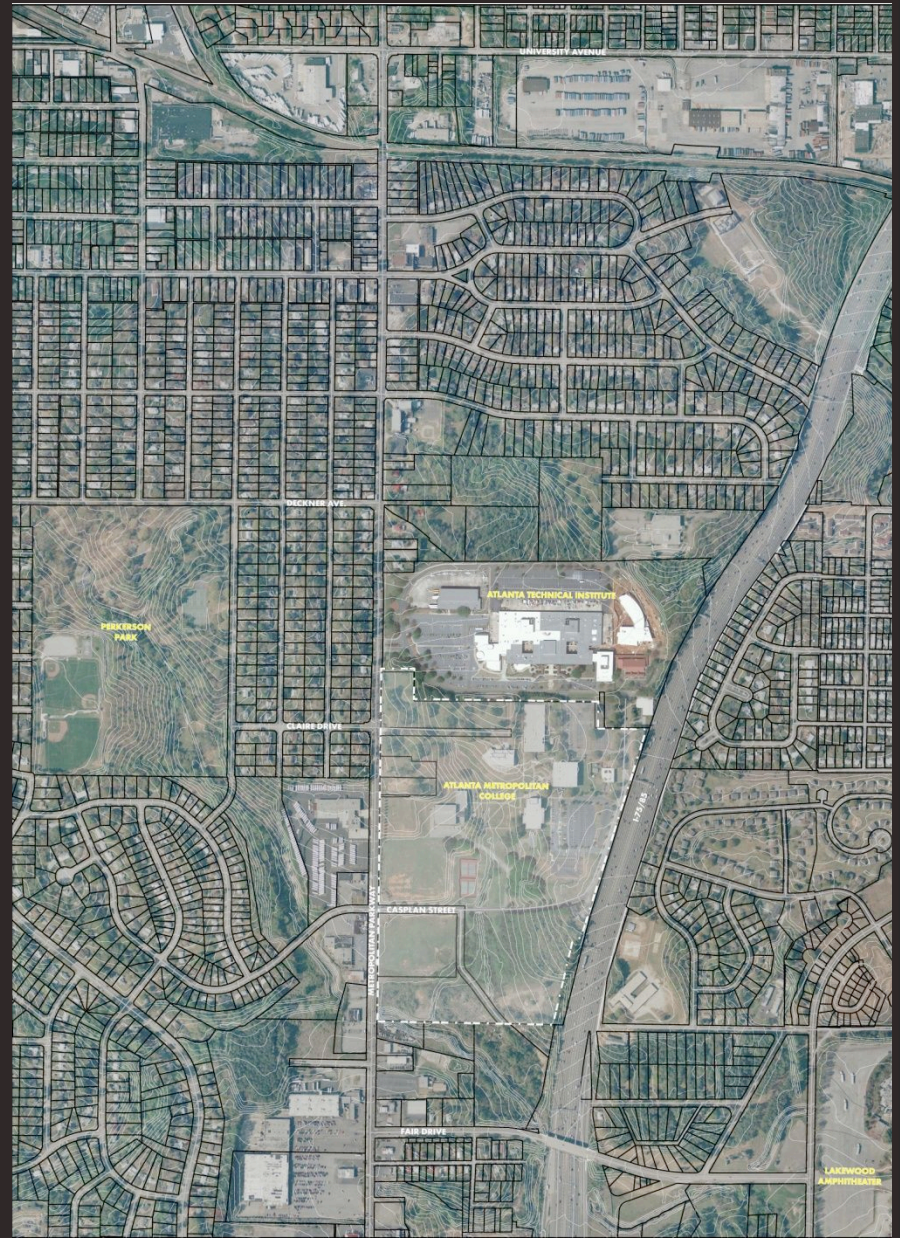
Higher Density Campus



EXISTING CONDITIONS



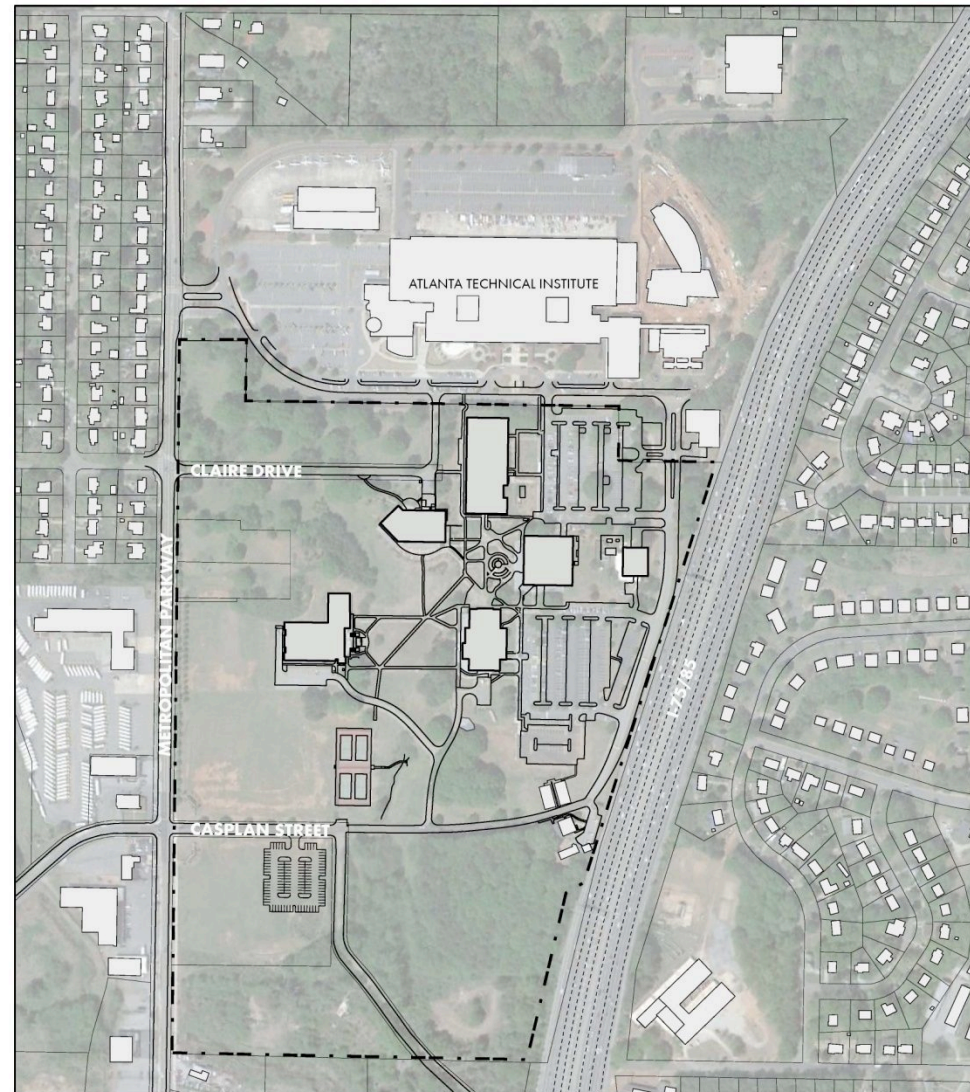
Aerial



Existing Conditions

- 14.3 Acres (22%) - Building and Parking Coverage
- 4.1 Acres (6%) – Recreation
- 47 Acres (72%) – undeveloped

- 65.4 Acres TOTAL



0 200 400

February 2011



Legend

Total Acreage: 65.4 Acres
- - - Campus Boundary

Existing AMC Site

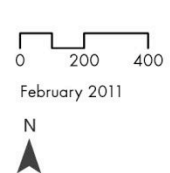
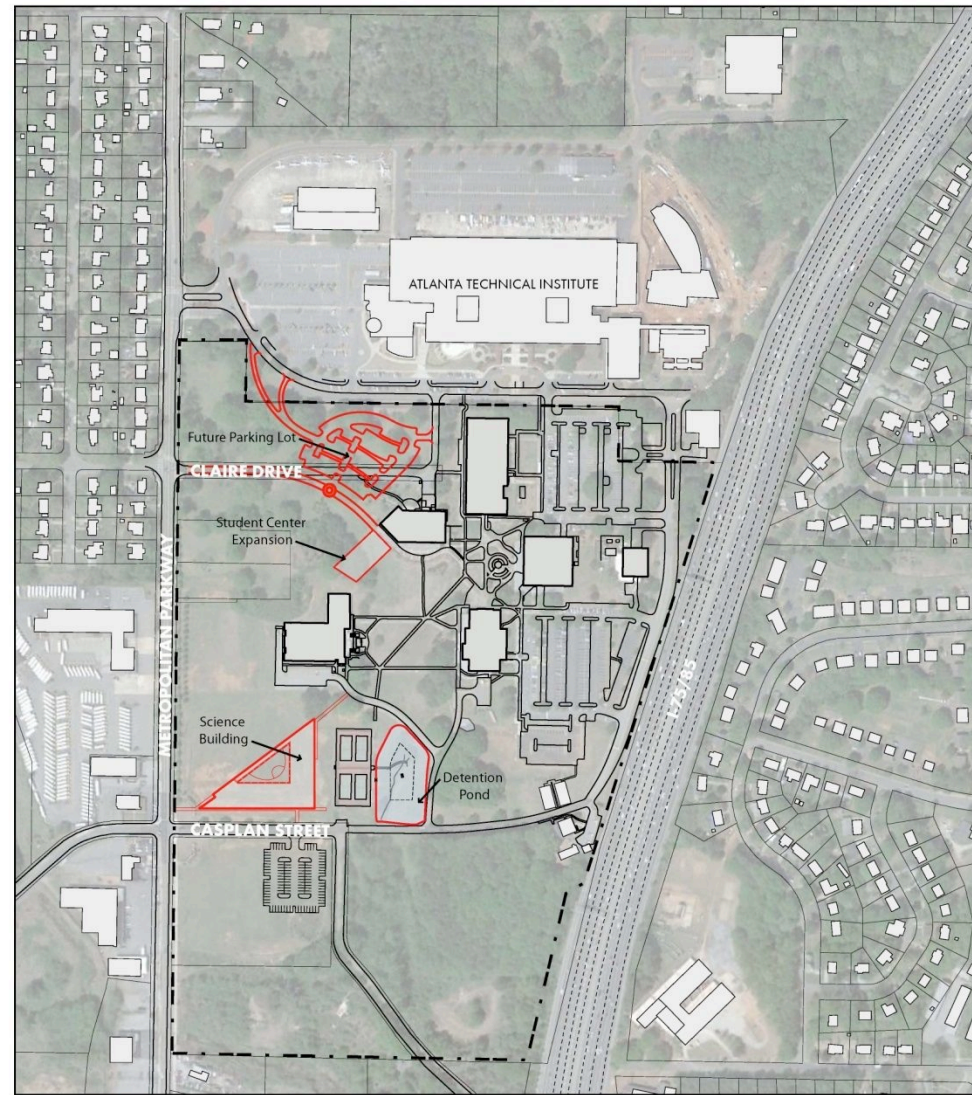
Atlanta Metropolitan College
Campus Master Plan



Work In Progress

- 17.6 Acres (27%) - Building and Parking Coverage
- 3.5 Acres (5%) – Recreation
- 44.3 Acres (68%) – undeveloped

- 65.4 Acres TOTAL



Legend
— Work in Progress

Work in Progress

Atlanta Metropolitan College
Campus Master Plan



Recreational Space

- 3.5 Acres (5%) – Recreation



0 200 400
February 2011



Legend

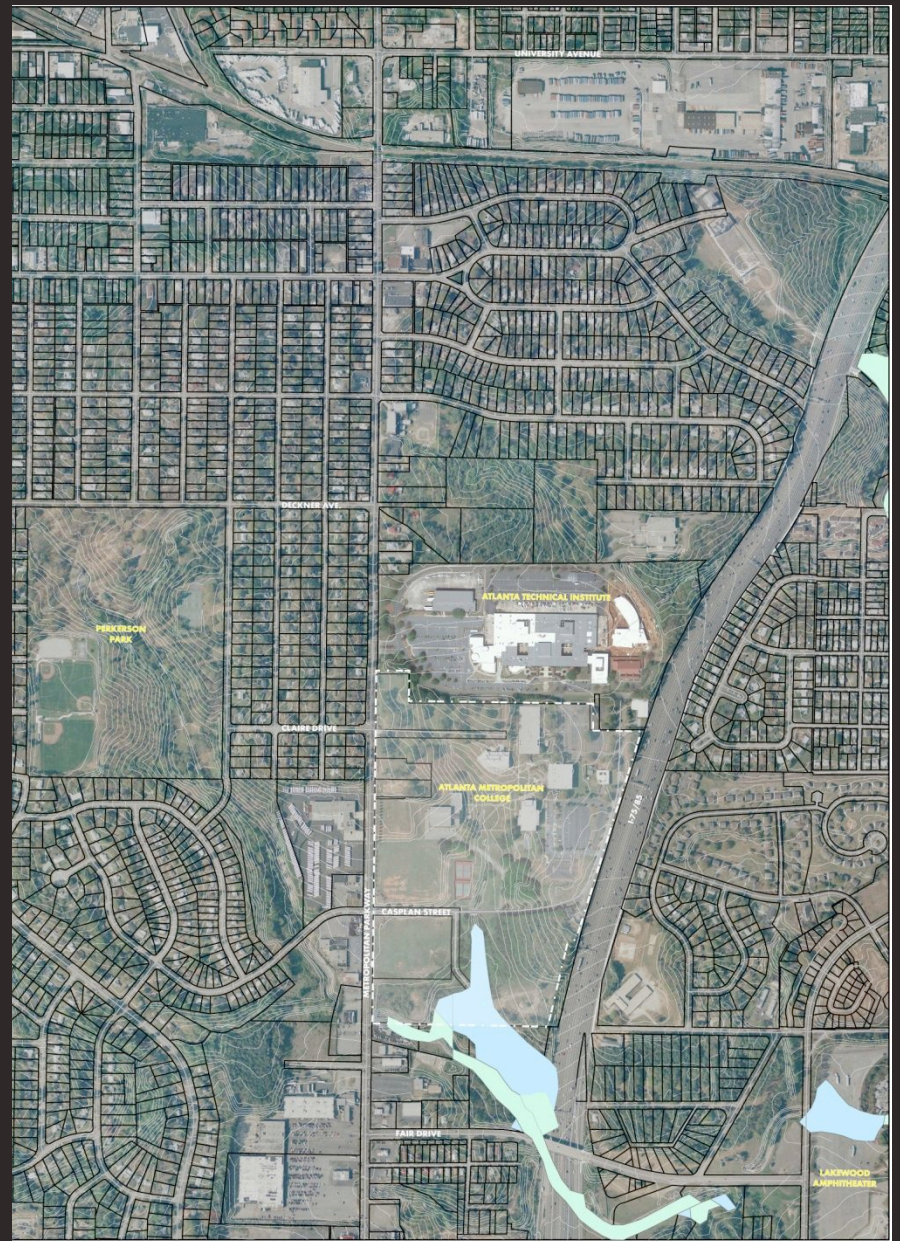
- Gymnasium
- Recreation Field
- Tennis Courts

Athletic Facilities

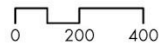
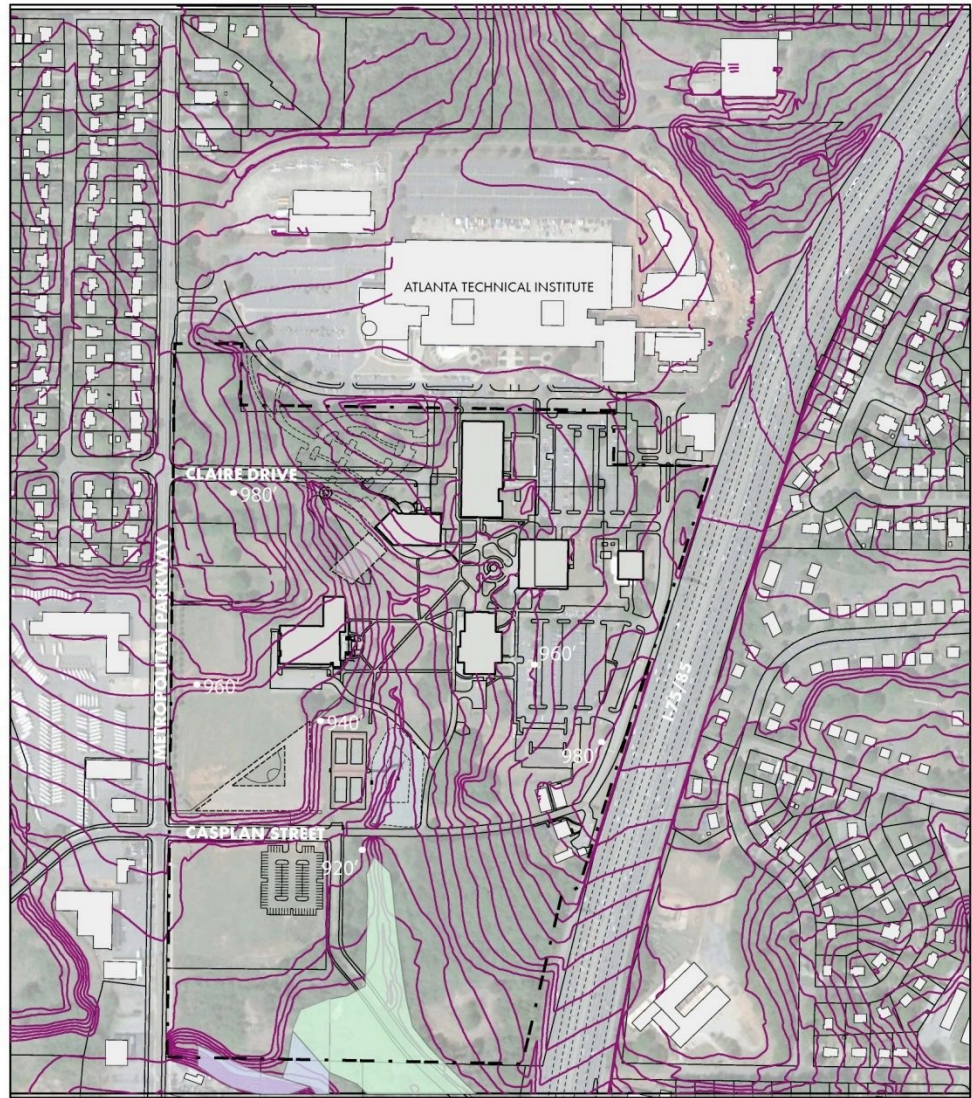
Atlanta Metropolitan College
Campus Master Plan



Flood Plains



Topography



February 2011



- Legend**
- 5' Contours
 - 100 Year Flood Plain
 - 500 Year Flood Plain

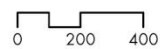
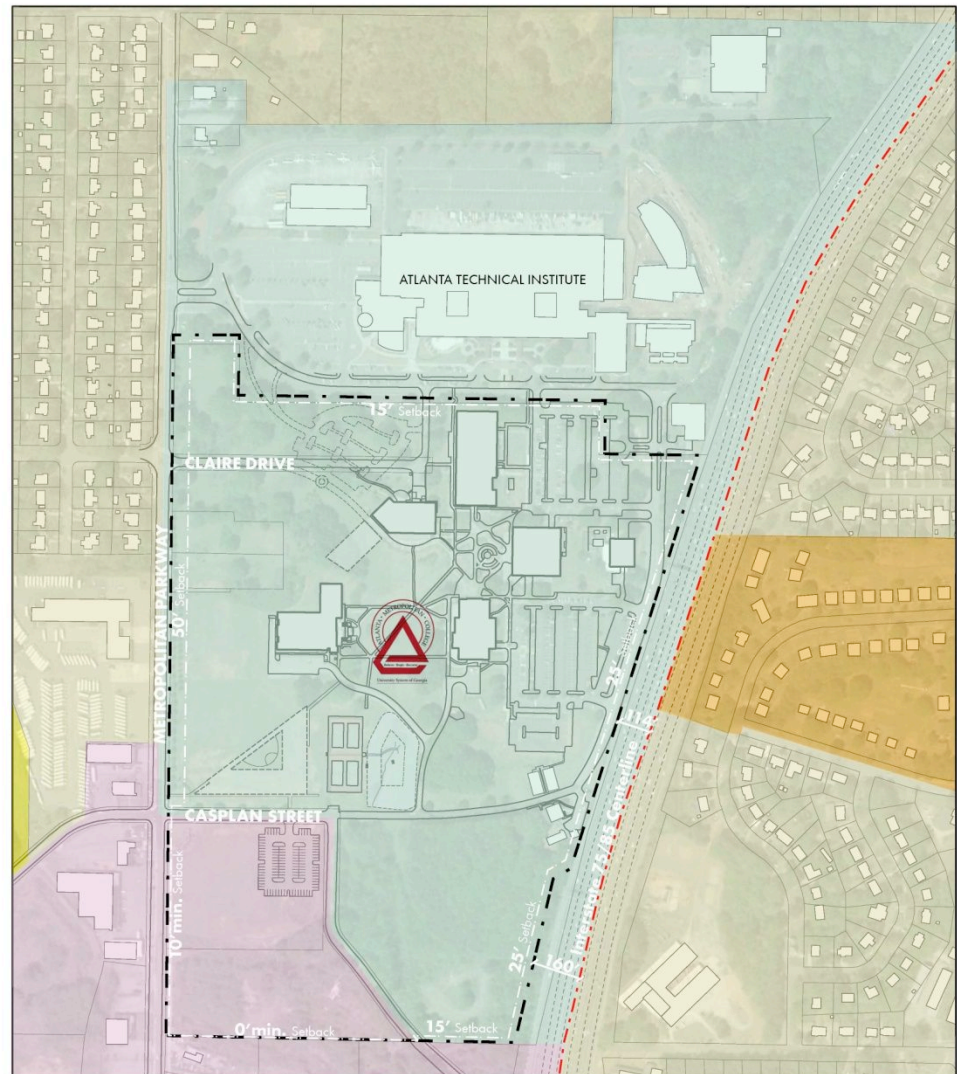
Environmental Issues

Atlanta Metropolitan College
Campus Master Plan



Zoning & Setbacks

- Typical Zoning Setbacks
- Highway Right of Way



February 2011



Legend

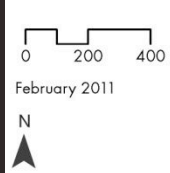
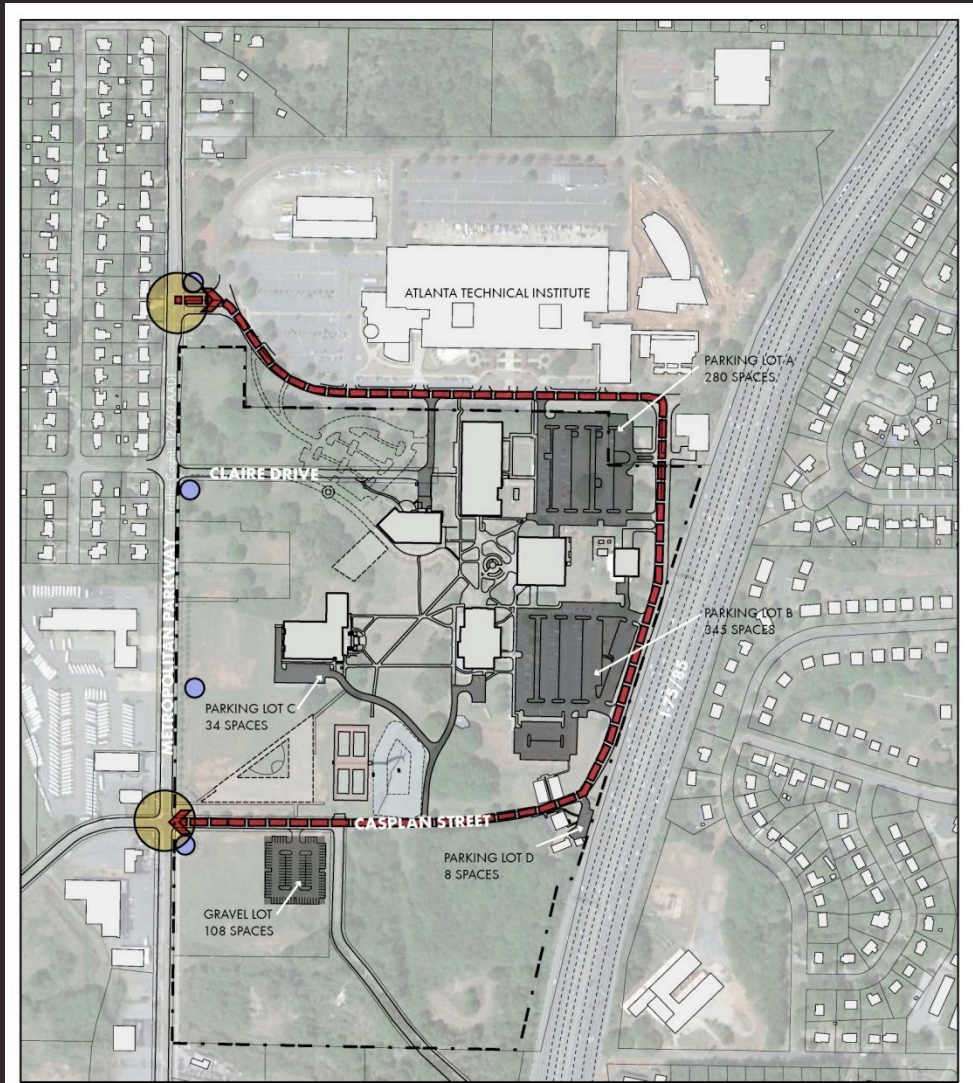
- Office Institutional
- Residential-Single Family
- Commercial
- Residential-Limited Commercial
- Residential-Duplex

Zoning Map

Atlanta Metropolitan College
Campus Master Plan



Entrances, Parking & Circulation.



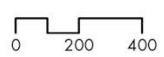
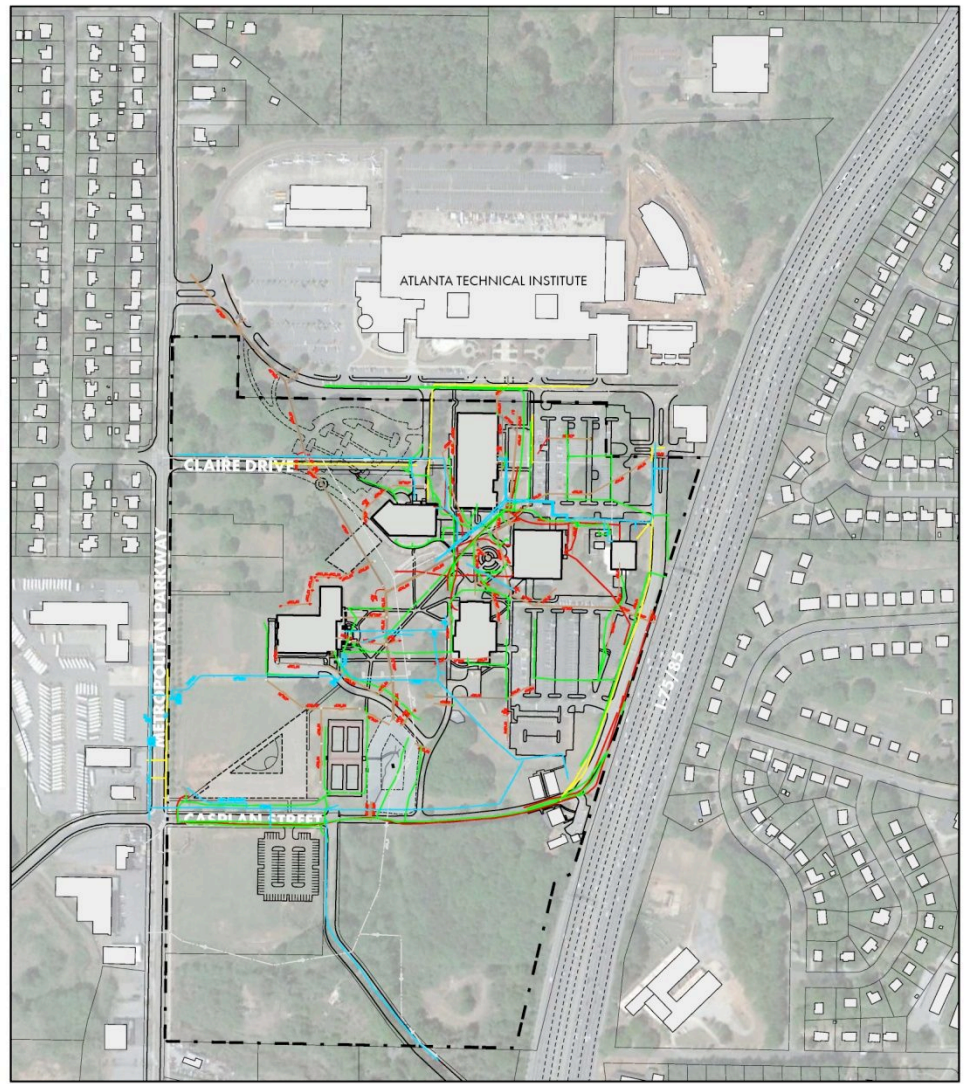
- Legend**
- Casplan Street (Loop Road)
 - Campus Access Points
 - Parking/Circulation
 - Bus Stop
- Total Parking: 775 Spaces

Vehicular Circulation and Parking

Atlanta Metropolitan College
Campus Master Plan



Utilities



February 2011



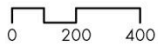
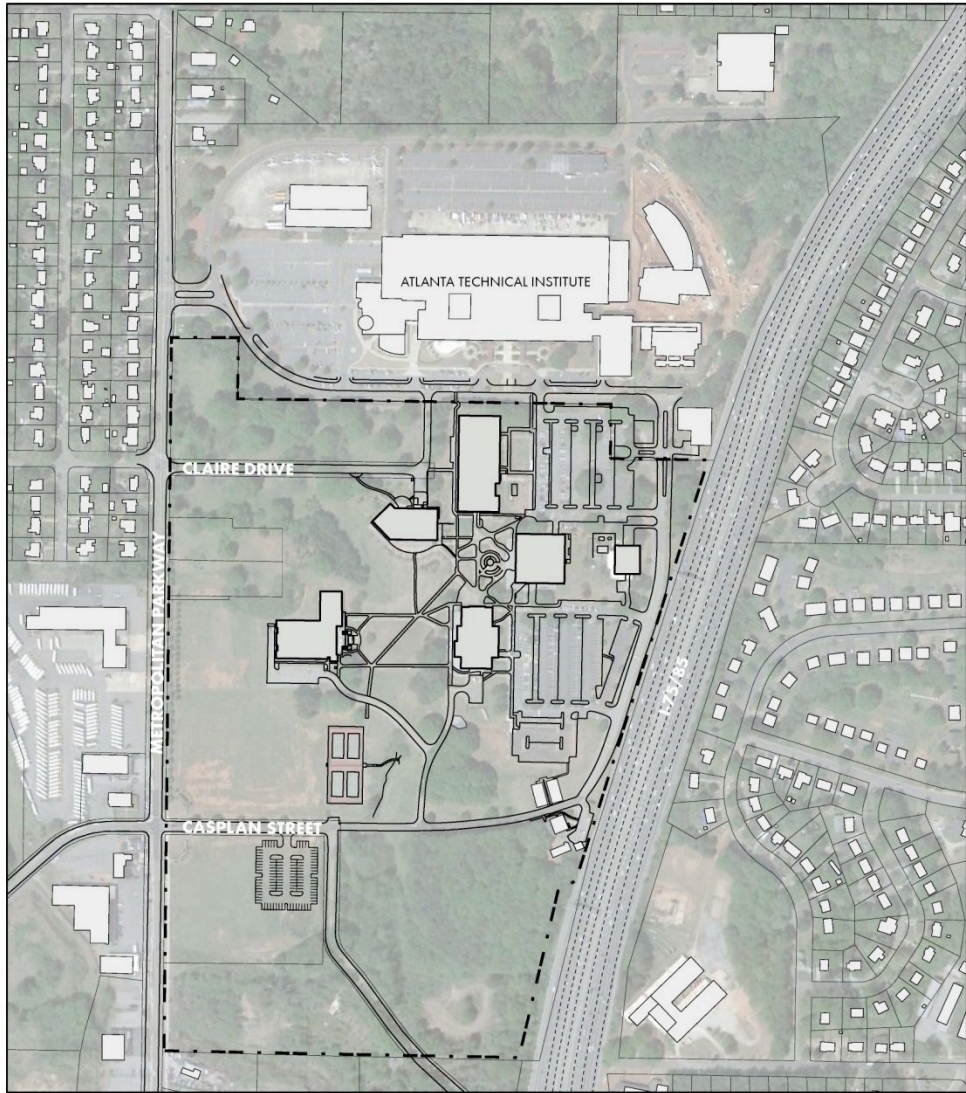
- Legend**
- Gas
 - Water
 - Electrical
 - Telecommunication
 - Sanitary
 - Storm Water

Underground Utilities

Atlanta Metropolitan College
Campus Master Plan



Building Condition



February 2011



Legend

Total Acreage: 65.4 Acres
- - - Campus Boundary

Existing AMC Site

Atlanta Metropolitan College
Campus Master Plan





Existing Facilities

- Building 100 Science Center ✓ -
- Building 200 Harmon House ✓ -
- Building 300 Casplan Warehouse X
- Building 400 Central Energy ✓
- Building 500 Academic Center ✓
- Building 600 Library/Admin. ✓
- Building 700 Health & PE Complex ✓
- Building 800 Student Center ✓
- 34 Peachtree (Leased Space) ✓

A vertical photograph on the left side of the slide shows a young Black man with short hair, wearing a dark suit jacket, a light blue shirt, and a patterned tie. He is sitting at a dark desk, leaning forward with his arms crossed, and smiling warmly at the camera. The background behind him is a brick wall and a window with light coming through. A thin red vertical line is positioned to the right of the photograph, separating it from the main text area.

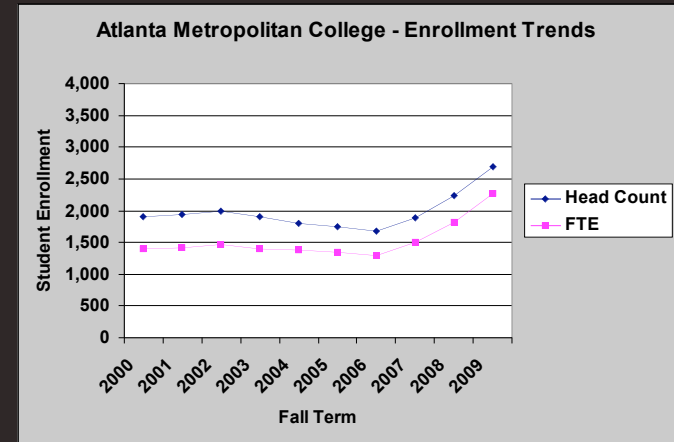
STRATEGIC OBJECTIVES

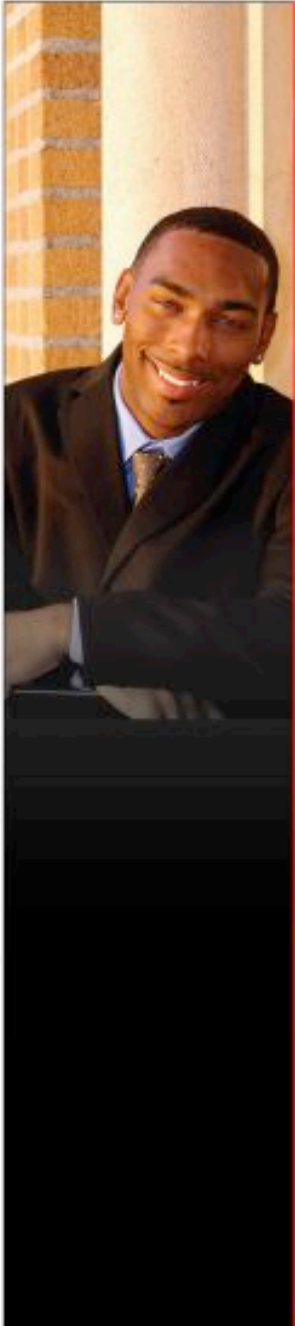
Educational Environment
Academic Mission & Goals
Enrollment Trends & Targets
Staffing Requirements
Residential Development

Educational Planning Environment

- ACADEMIC EXCELLENCE
- Access Institution
- Affordability
- Personalized Attention
- Hosting/Outreach Activities

- Rapid Enrollment Increases
- Multi-campus Institution
- Addition of 4-Yr Program
- Residential → Student Life Vision





An Exemplary Teaching Institution

- Provides traditional and non-traditional students with learning experiences that challenging, supportive, individualized and innovative.
- Prepares students for
 - transfer to baccalaureate programs
 - entry or reentry into the work force
 - responsible participation in a rapidly changing, technologically sophisticated global society
- Values
 - faculty-student interactions
 - faculty use of innovative technologies
 - meaningful student participation
 - respect for intellectual & creative endeavors

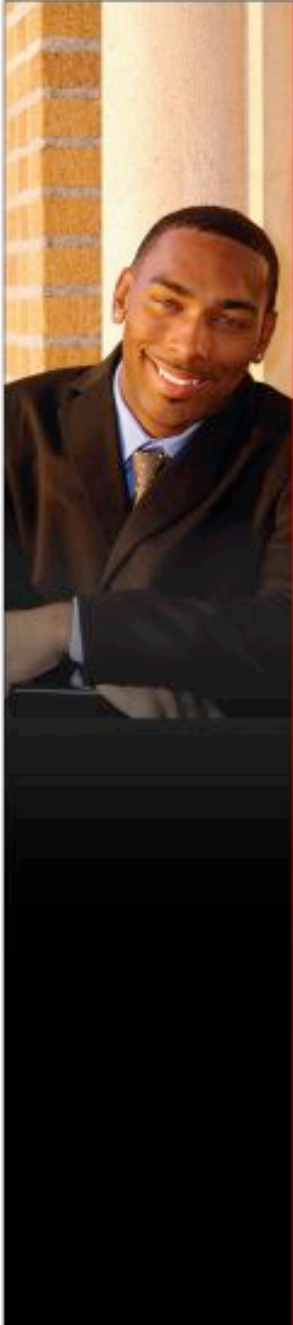


A CHANGE AGENT

A CHANGE AGENT within its geographical
scope of influence

**EDUCATIONAL ACCESS FOR
UNDERSERVED STUDENTS WHO RETURN
TO & REVITALIZE THEIR COMMUNITIES**

- Collaborations with
 - K-12 school systems
 - 4-yr institutions
 - Government agencies
 - Business corporate and civic entities
- Outreach activities
 - Community revitalization efforts
 - Relevant curricular & co-curricular activities
 - Expanded public service initiatives
- TRIO Programs
- Continuing Education



PROGRAMS OF STUDY

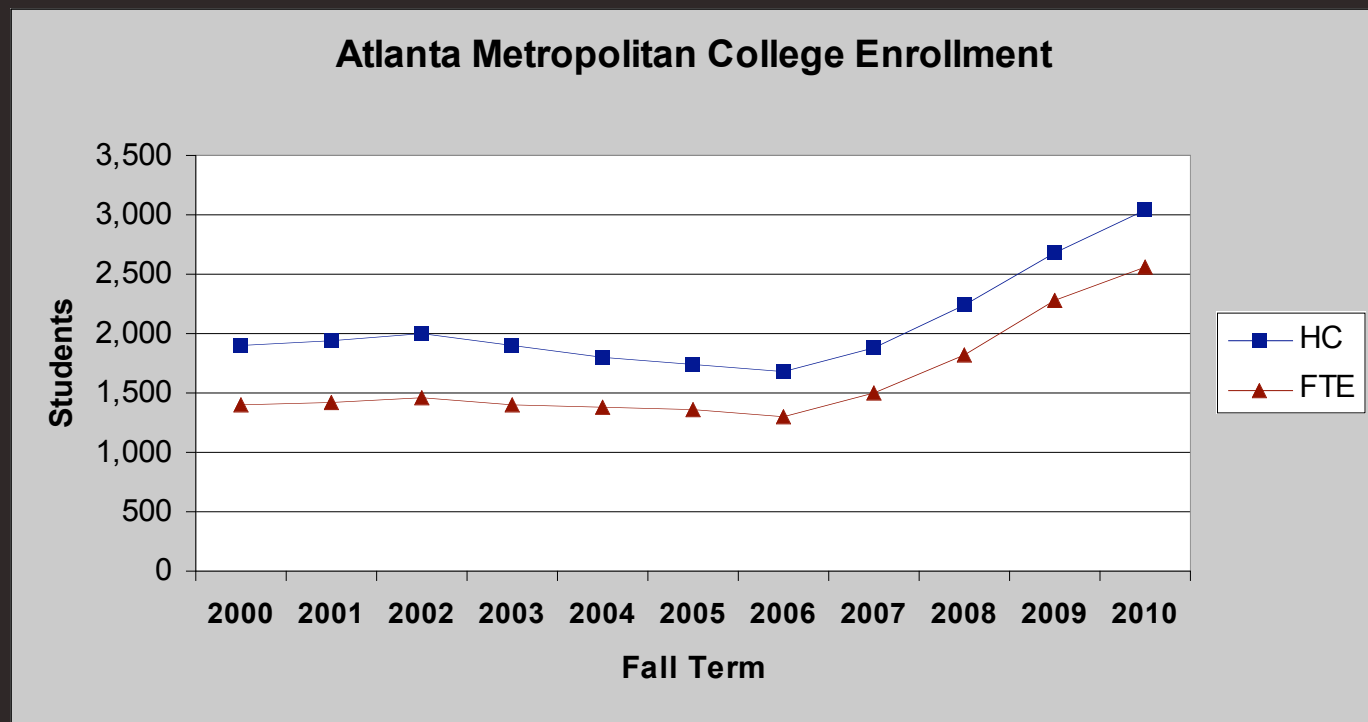
- Associates Degree (USG Transfer Programs)
 - Associates of Arts
 - *General Studies* 524 majors
 - Associate of Science
 - *Pre-Nursing* 479 majors
 - *Business Administration* 443 majors
 - *Teacher Education* 209 majors
 - *Criminal Justice* 196 majors
 - *Biology* 121 majors
 - *Psychology* 117 majors
- Career & Certificate Programs
 - *AAS Programs* 61 majors
 - *Certificate Programs* 64 majors



On the Plus Side

- Quality & character of academic programs
- Dedicated faculty and staff – commitment plus credentials
- Actions Aligned with Objectives
 - Intentional in serving underrepresented groups
 - Accessible academically and financially
 - Supportive of nontraditional students
 - Nurturing through personal interaction
 - Varied instructional approaches
- Great Students

Recent Enrollment Trends



- 3-Yr Ave Increase = 17%
- 5- Yr Ave Increase = 12%

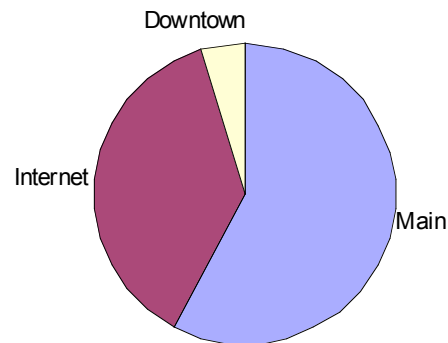
Ratio of FTE/HC has increased from 73% to 84%

Access to Instruction – F 2010

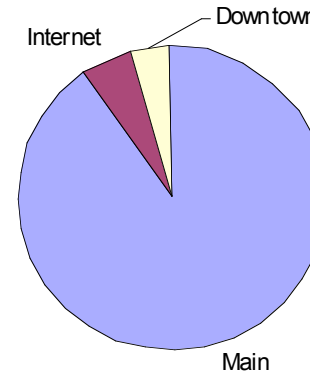
9% Cr Hrs Taught by INTERNET

3% Cr Hrs Taught Downtown

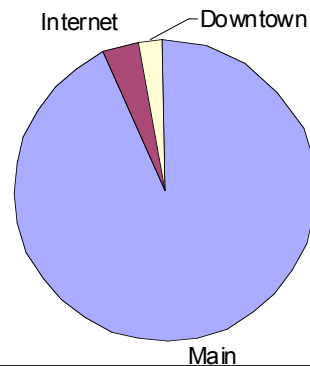
Business & Computer Science



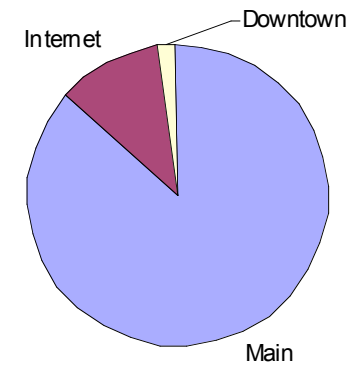
Humanities & Fine Arts

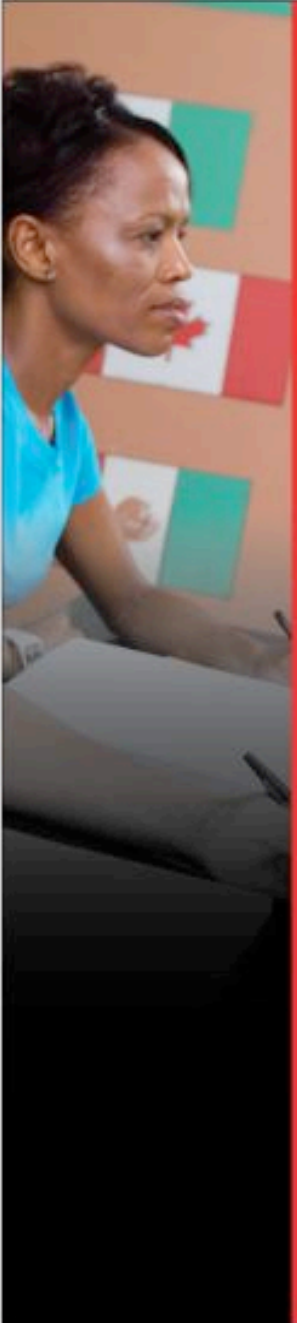


Science, Math & Health Professions



Social Sciences





Recent Staffing Trends

From 2005 to 2010

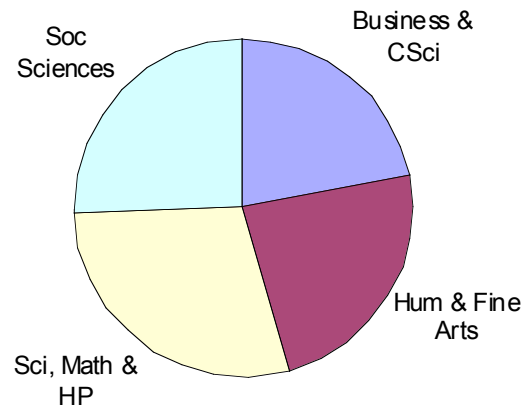
- FTE **Enrollment** increased by **89%**
- FT Faculty increased by **30%**
- PT Faculty increased by **370%**
- FT Non-Managerial Staff increased by **25%**
- PT Non-Managerial Staff increased by **82%**

Employee Category	FT	PT	FTE/PT	FTE	FT/ (FTE)
President	1	0	0.0	1.0	100%
Admin/Managers	25	1	0.5	25.5	98%
Faculty	57	113	45.0	102.0	56%
Professional	36	3	1.5	37.5	96%
Secr/Clerical	37	18	9.0	46.0	80%
Tech/Paraprof	10	20	10.0	20.0	50%
Skilled Crafts	3	0	0.0	3.0	100%
Serv/Maintenance	20	0	0.0	20.0	100%
College Total	189	155	66	255	74%

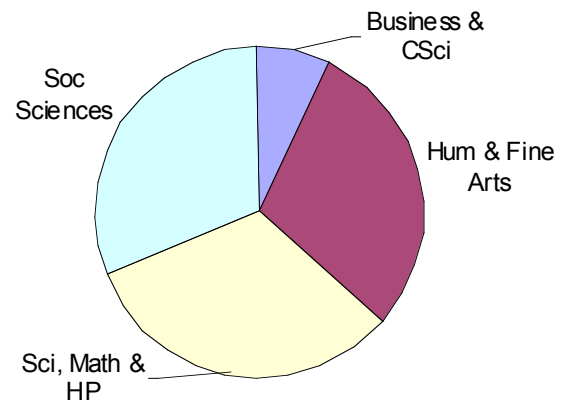


Enrollment & Faculty by Division

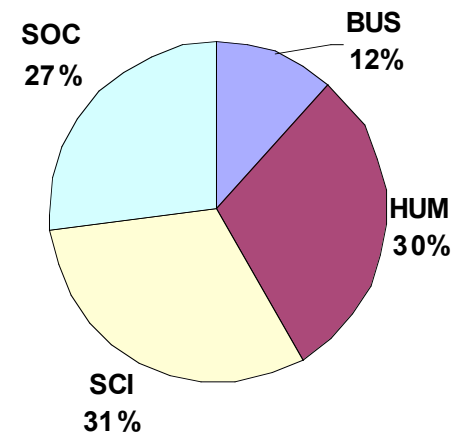
Majors by Division



Credit Hours by Division



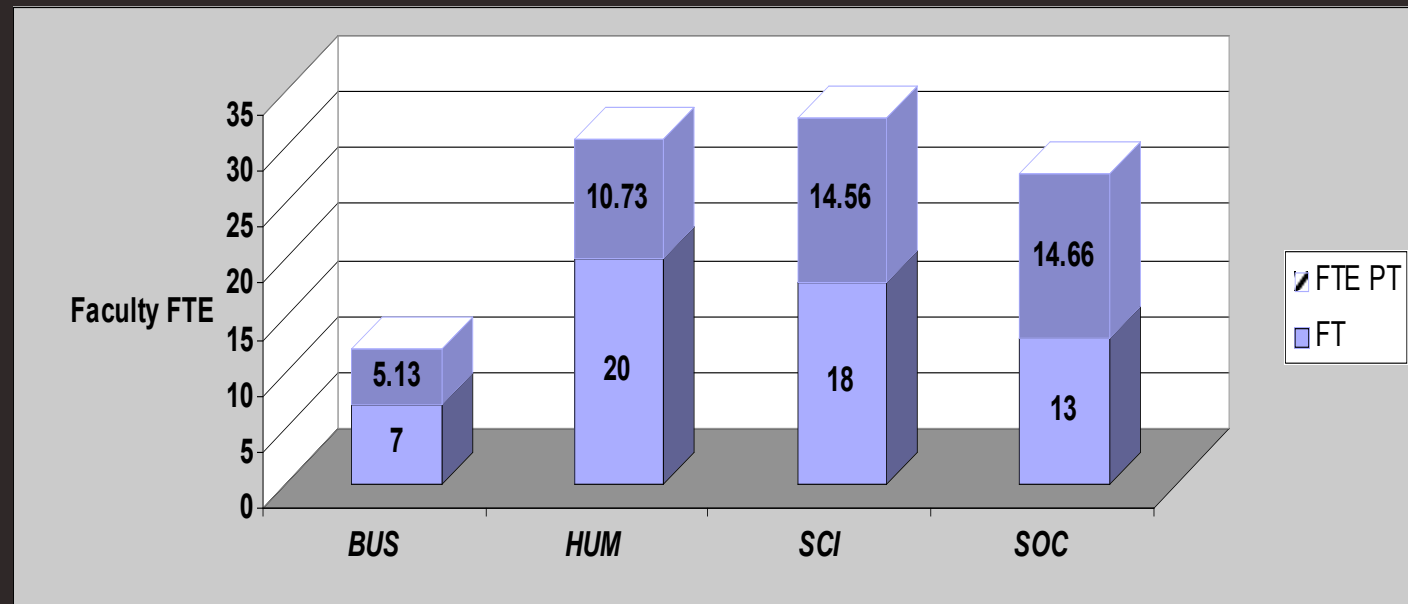
Faculty FTE



Staffing by FT/PT and by Division

2005: FT Faculty/FTE Faculty = 80%

2010: FT Faculty/FTE Faculty = 56%

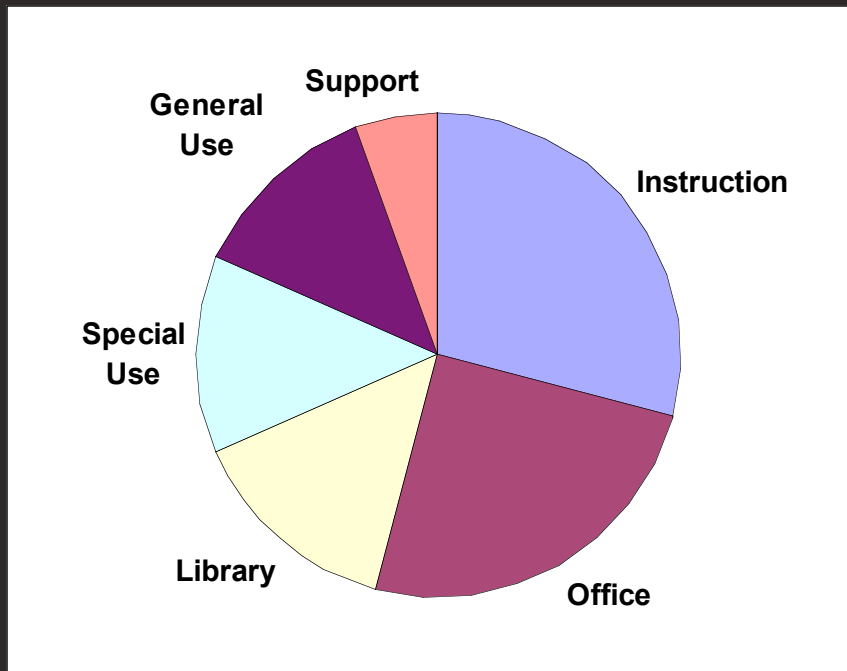


TARGET for FT Faculty/FTE Faculty 70%



Fall 2010 – Baseline Conditions

In Fall 2010 Atlanta Metro enrolled 3,037 students
and had 344 staff



165,000 ASF
253,000 GSF

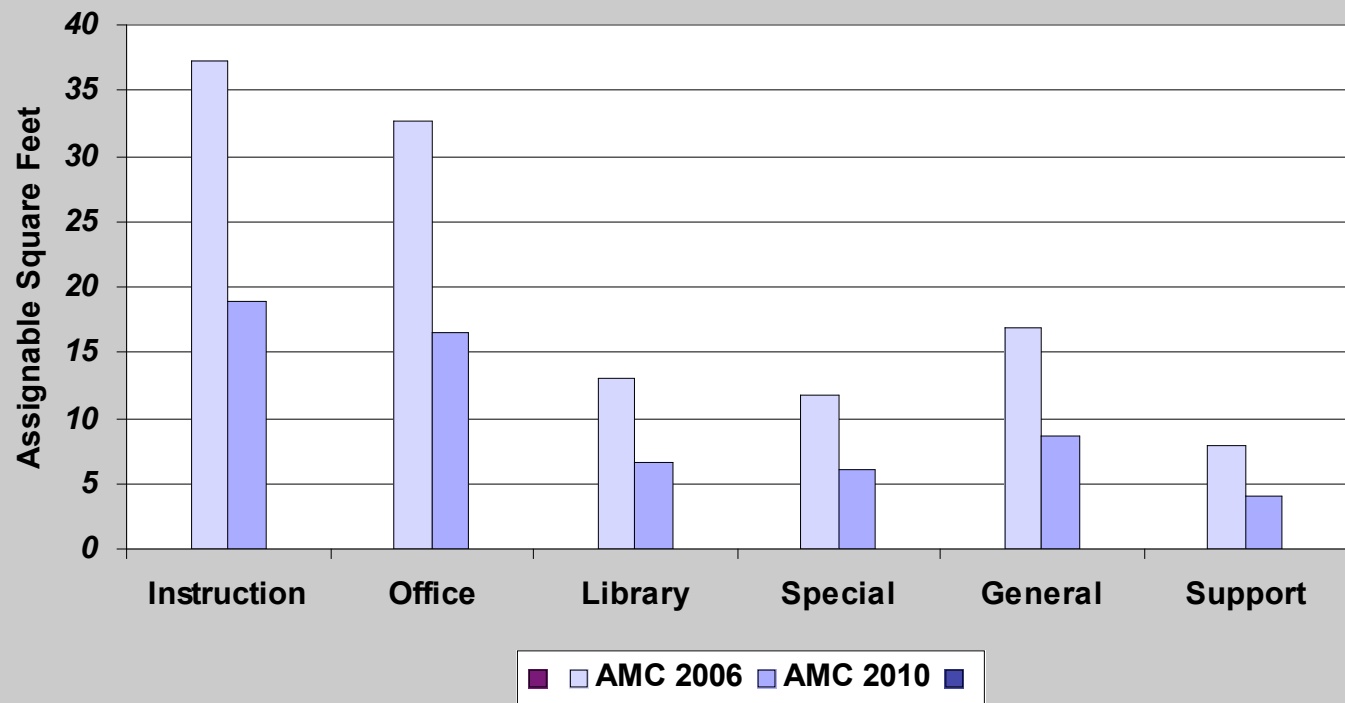
29% of ASF is
Instructional
Space

Downtown Campus has about 6,600 ASF

Implications of Enrollment Growth



Space per Student FTE





Instructional Space

Classrooms are **OVERCROWDED**

There are **NOT ENOUGH** Classrooms. . .

Classrooms are the wrong size (too few seats)

AMC needs more classrooms with 40-60 seats

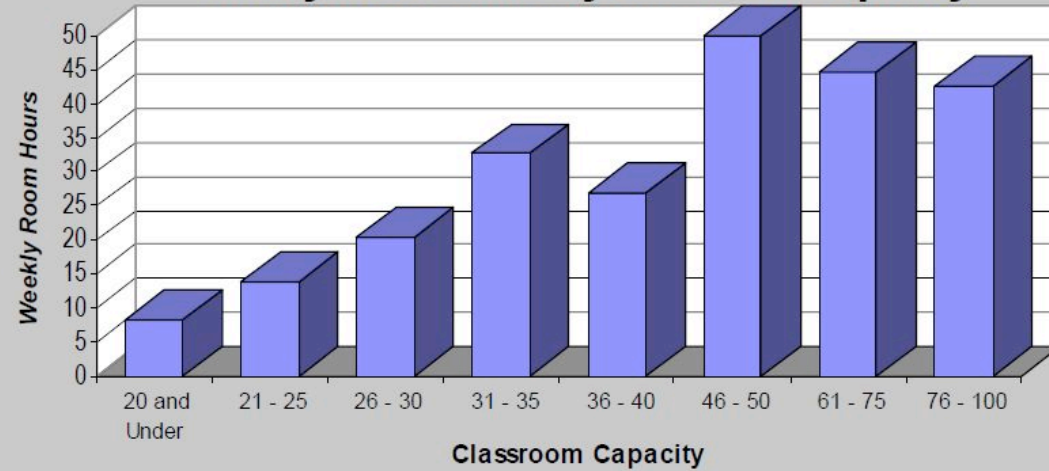
Classrooms not available at peak periods

Real Problems or Inaccurate PERCEPTIONS?

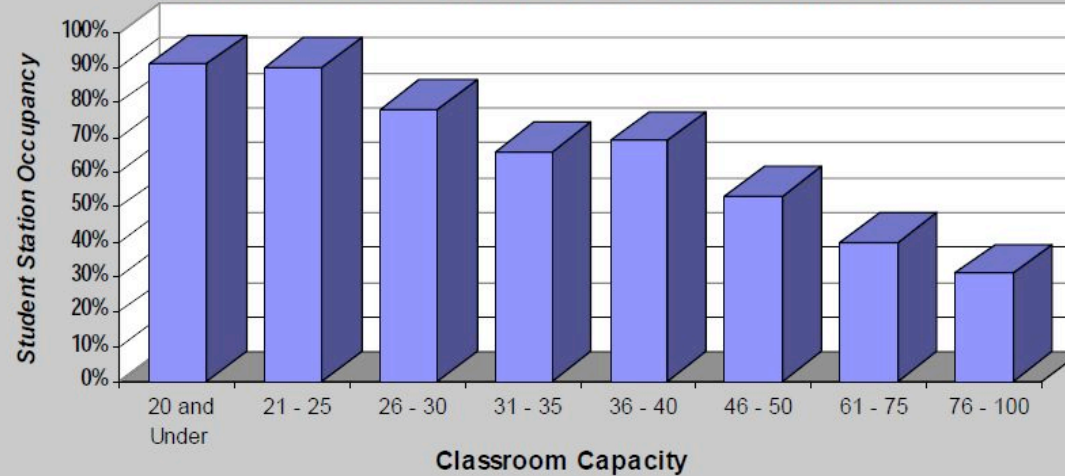


Utilization by Capacity

Weekly Room Hours by Classroom Capacity



Student Station Occupancy by Classroom Capacity



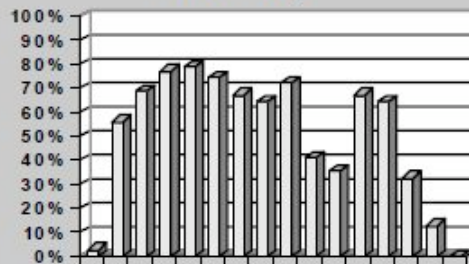


Utilization by DAY of WEEK

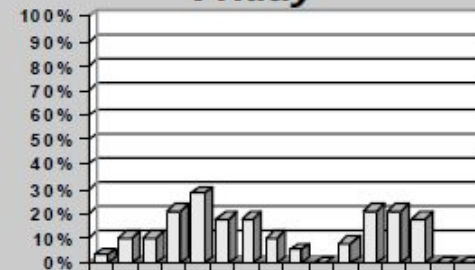
M/W and T/Th

F and S

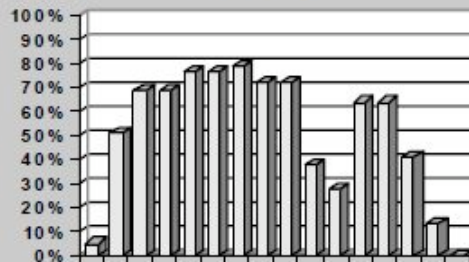
Monday



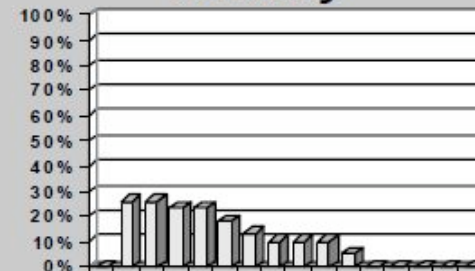
Friday



Tuesday



Saturday

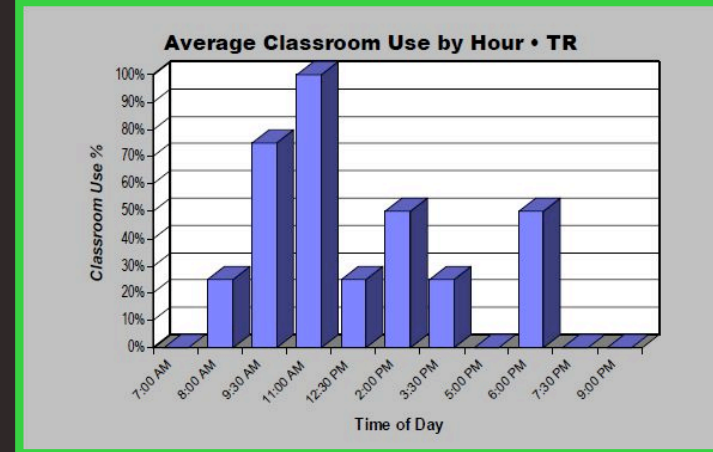
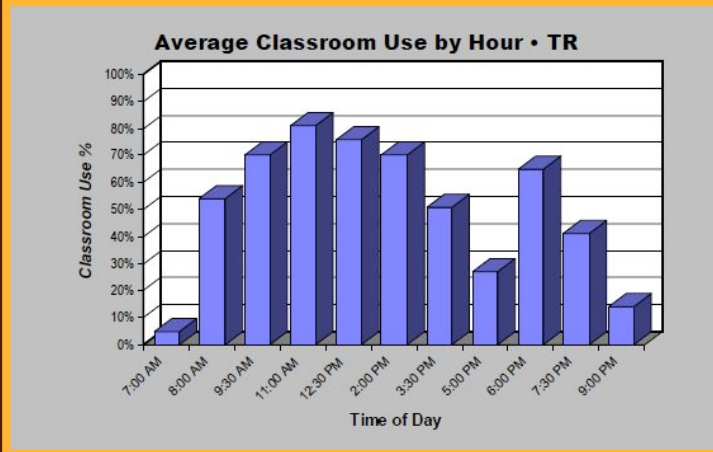
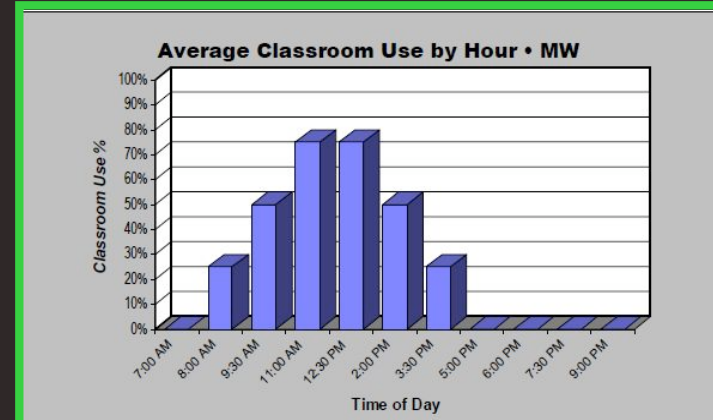
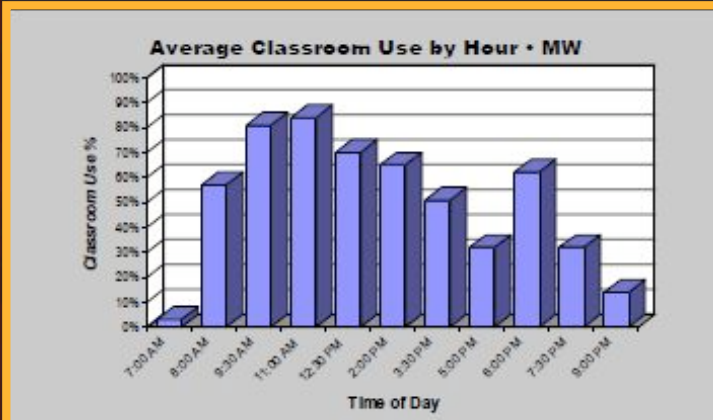




Utilization by Time of Day

AMC Main Campus

AMC Downtown





Other Users of Instructional Space

Not-for-Credit Programs

Upward Bound

Talent Search/EOC

Continuing Education

Others?

Testing

RGEX, COMPASS, Other testing?

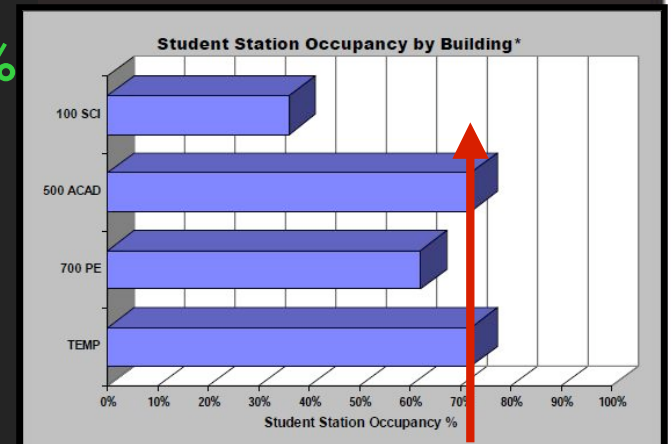
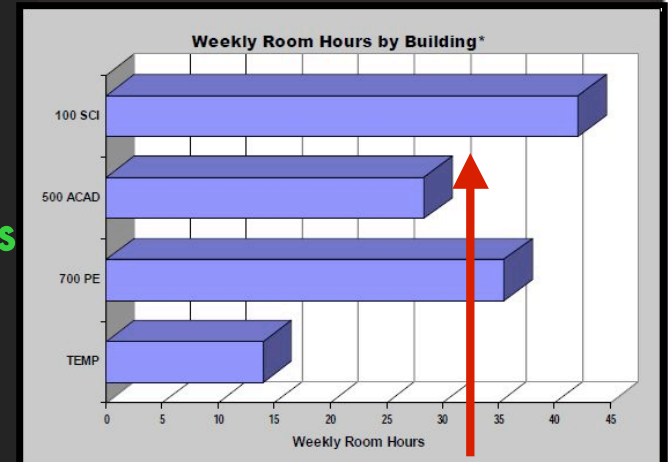


Classroom Guidelines vs. Actual

- **Weekly Room Hrs in Use**
 - **CEFPI Target** **30 Hrs**
 - **USG Avg** **20 Hrs**
 - **AMC F 10** **29/18 Hrs**

- **Station Occupancy**
 - **CEFPI Target** **65%**
 - **USG Avg** **60%**
 - **AMC F 10** **62%/47%**

- **Station Size**
 - **CEFPI Target** **20 ASF**
 - **USG Avg** **20 ASF**
 - **AMC F 10** **20/29 ASF**



Laboratory Guidelines vs. Actual

Weekly Room Hrs

- CEFPI Target 16 Hrs
- USG Avg 10 Hrs
- AMC F10 24 Hrs

Station Occupancy

- CEFPI Target 80%
- USG Avg 60%
- AMC F10 62%

Station Size

- CEFPI Target 30 -200 ASF
- USG Avg 37 ASF
- AMC F10 34 ASF



Normative Standards

Post-secondary Education Facilities Inventory & Classification System CEFPI WICHE ACRL

- **Classroom Space** per Weekly Student Contact Hours
- **Laboratory Space** by disciplines offered, enrollment and staffing levels
- **Office Space** by number & mix of staff
- **Library Space** by volumes, student FTE
- **Performance Space** by mix of programs and FTE
- **Physical Plant** by amount of built space
- **Residential Space** by number of beds and nature of accommodations



Surplus & (*Deficits*) – Fall 2010

SPACE NEEDS ANALYSIS

Atlanta Metropolitan College - Main Campus

Baseline Year - Fall 2010

ENROLLMENT	Existing Assignable Square Ft.	Guideline Assignable Square Ft	Surplus or (Deficit) in ASF	Percent Surplus or Deficit (vs Guideline)
3,037 HC/2,555 FTE				
SPACE TYPE				
<i>Academic Space</i>				
Classroom & Service	31,561	34,098	(2,537)	-7%
Scheduled Teaching Laboratories & Service	8,163	13,000	(4,837)	-37%
Open Laboratories & Service	7,911	11,242	(3,331)	-30%
Library (collection, study, service)	22,216	24,515	(2,299)	-9%
<i>subtotal</i>	69,851	82,855	(13,004)	-16%
<i>Student Support Spaces</i>				
Assembly & Exhibit	7,225	14,000	(6,775)	-48%
Athletics/PE/Recreation	22,196	28,775	(6,579)	-23%
Student Union (gathering, merchandizing)	15,023	22,995	(7,972)	-35%
<i>subtotal</i>	44,444	65,770	(21,326)	-32%
<i>Offices & General Support Space</i>				
Offices & Office Service	41,799	42,768	(969)	-2%
Physical Plant & Central Computer	9,431	9,366	65	1%
<i>subtotal</i>	51,230	52,134	(904)	-2%
ACADEMIC CORE	165,525	200,759	(35,234)	-18%

Amount of most space types was ADEQUATE for 2,000 HC
 Classroom & Office are sufficient to support F 2010 Enrl
 Deficits in Lab, Library, Athl/PE/Rec and Stu Union are the
 result of rapid enrollment increase to over 3,000 HC

Condition of Space

- Access
- Acoustics
- Adjacencies
- Age
- Allocations
- Ambient Environment
- Attractiveness
- Audio-Visual Resources
- Technology Infrastructure



Age and Attractiveness

Macon State College



Gainesville State College



Middle Georgia College



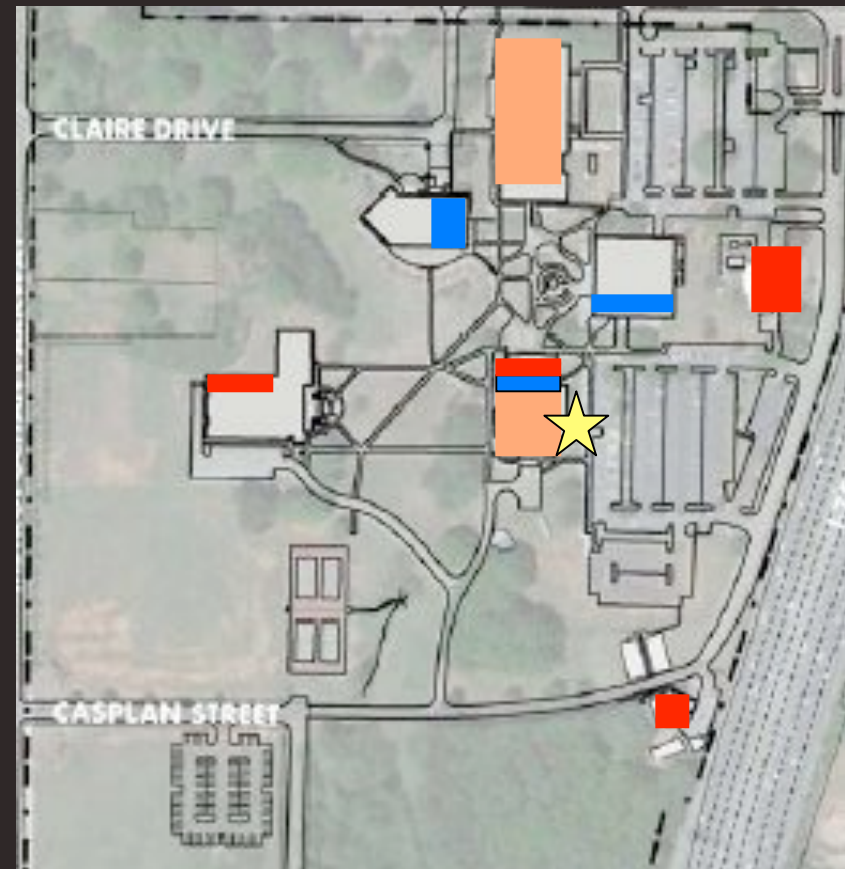
Adjacencies & Allocations

Academic Bldg =
42% non-Academic

Student Services
widely dispersed

Physical Plant is all
over the campus

Campus Safety in
ACADEMIC Bldg



***Inconvenient = Reduced Productivity for Students & Staff
Inequitable or Inappropriate Use of Space = Overbuilding***

AV Technology & Infrastructure



Instructional
Technology is
STANDARDIZED

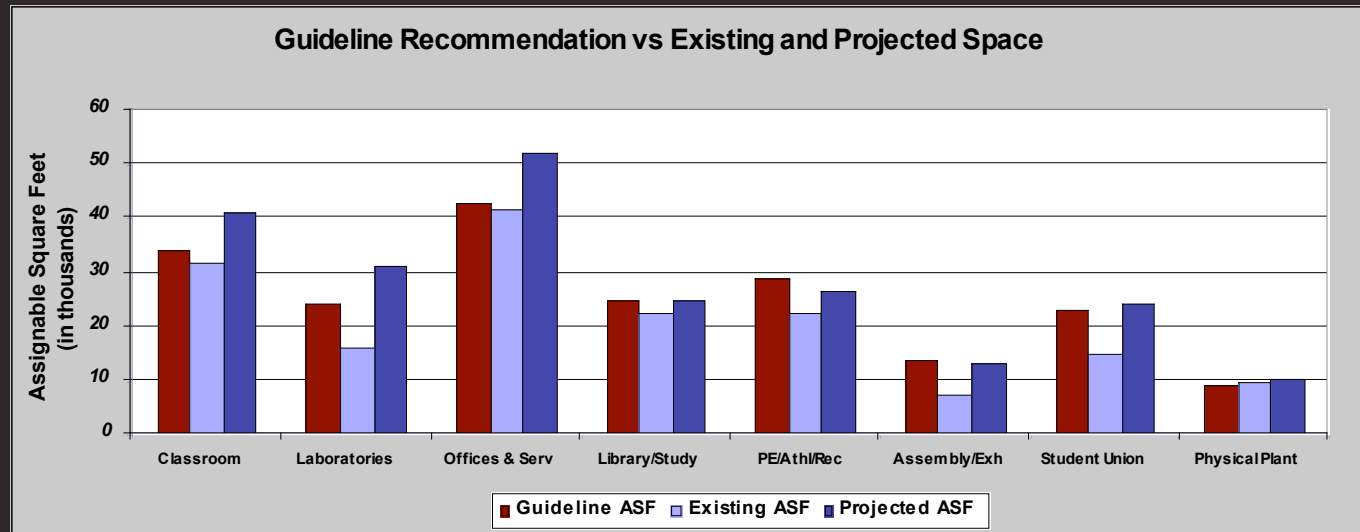
Equipment is
UPGRADED
every 3 years

Issues:

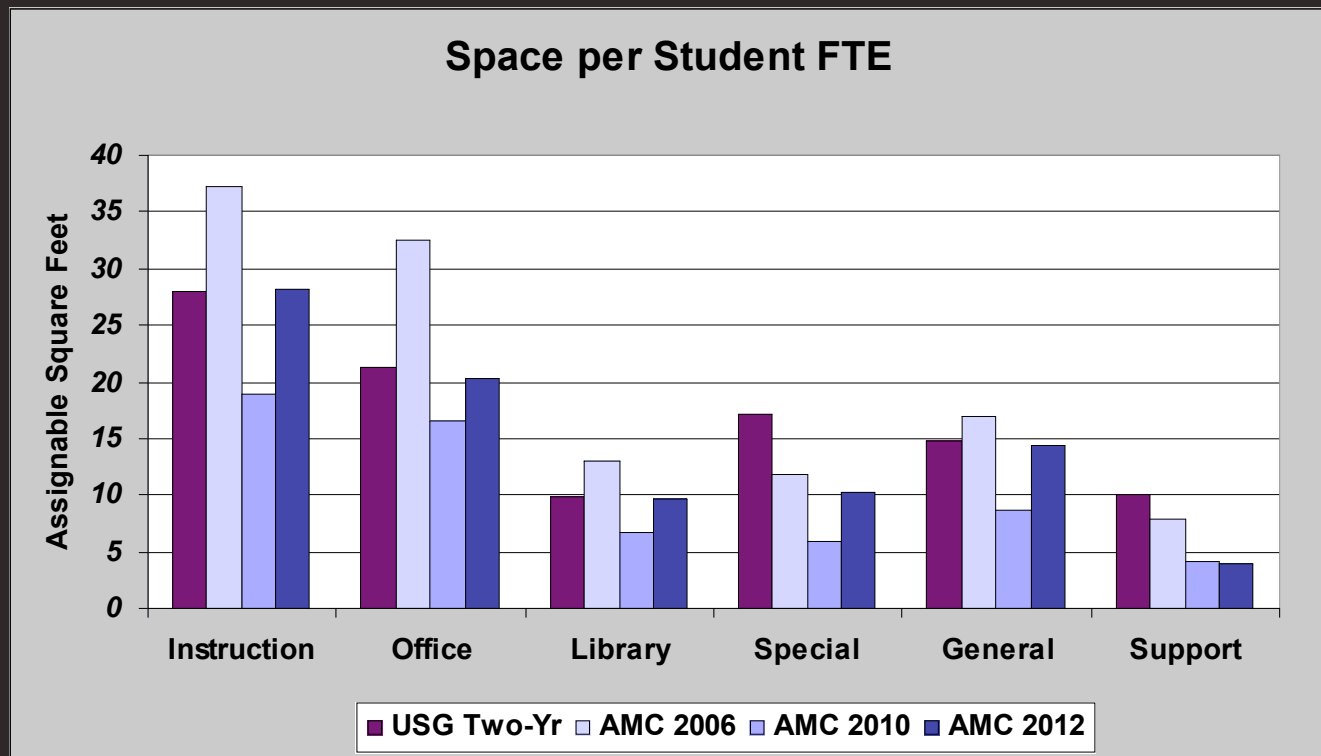
RELIABILITY
STATE-OF-ART
LIGHTING

Anticipated Capital Improvements

Room Use Code	SPACE TYPE	Fall 2010 Baseline Existing Assignable Square Ft.	In Progress ACADEMIC SCIENCES Assignable Square Ft	In Progress STUDENT CENTER ADDN Assignable Square Ft	In Progress Changes to Baseline Yr ASF	Projected Assignable Square Ft.	Percent Increase over Existing
100	Classroom & Service	31,561	9,440		9,440	41,001	30%
200	Instructional Labs	16,074	15,060		15,060	31,134	94%
300	Offices & Office Service	41,799	6,325	4,267	10,270	52,069	25%
400	Library (collection, study, service)	22,216	2,280		2,280	24,496	10%
500	Special Use Space	22,196	0	4,241	4,241	26,437	19%
600	General Use Space	22,248	200	14,781	14,777	37,025	66%
700	Support	9,431	250	0	776	10,207	8%
TOTAL NON-RESIDENTIAL SPACE		165,525	33,555	23,289	56,844	222,369	34%



Compare with USG Two-Yr Schools

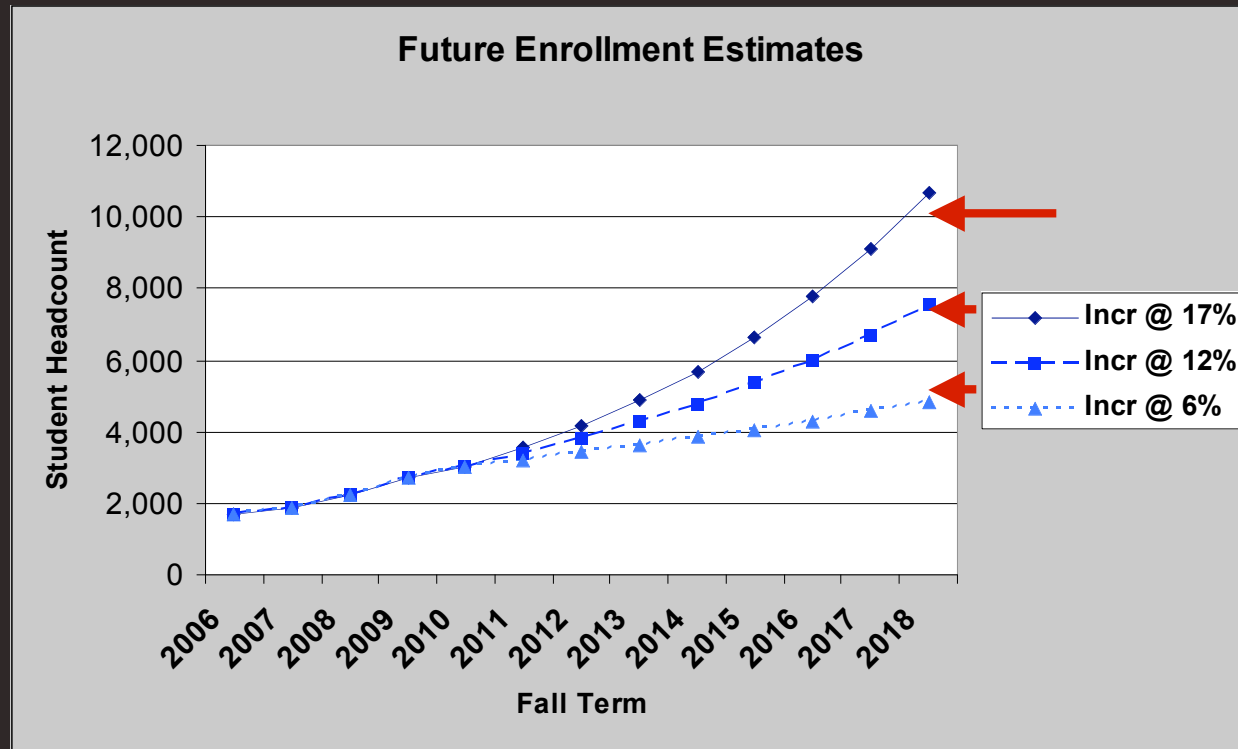


Largest RELATIVE shortfalls are in
Special Purpose Space (PE/Athletic/Recreation)
Physical Plant Space



FUTURE REQUIREMENTS

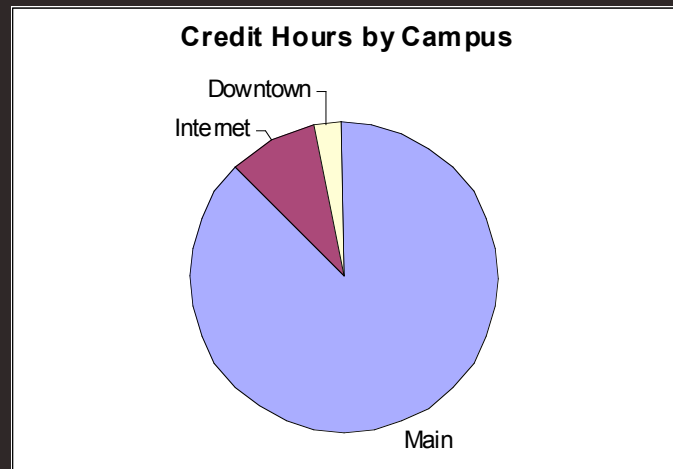
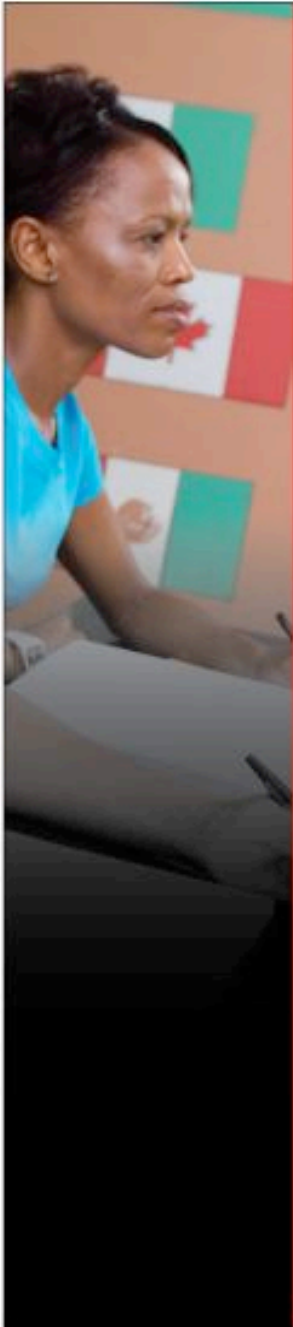
Project Future Enrollment Growth



Enrollment Targets for Modeling Space Needs

5,000 HC, 7,500 HC and 10,000 HC

Technology & Instruction



Fall 2010 – Cr Hrs

Main = 88%

Internet = 9%

Downtown = 3%

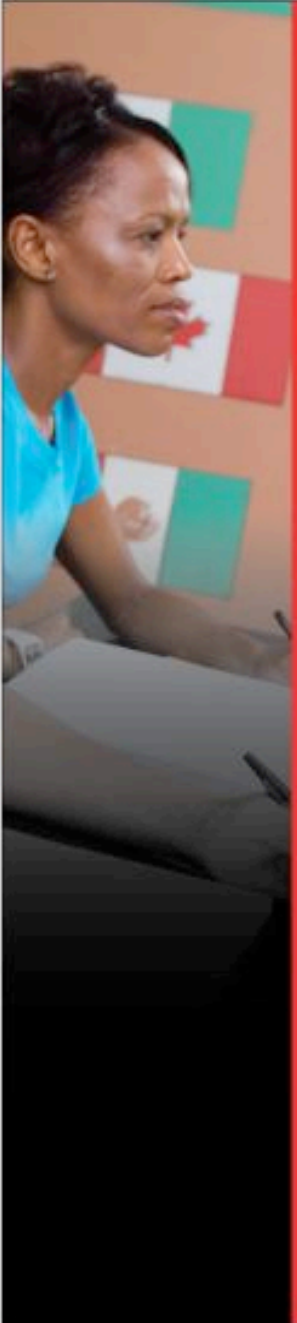
FUTURE – Cr Hrs

Internet = will increase
from 9 % to 18%

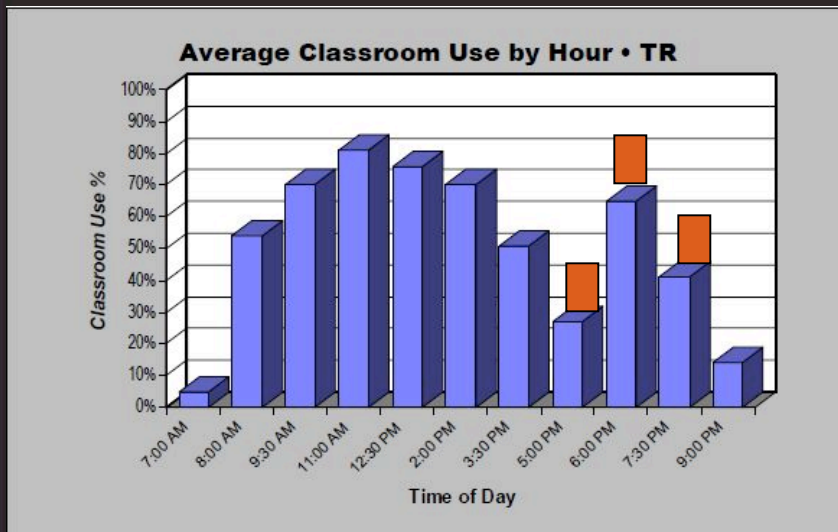
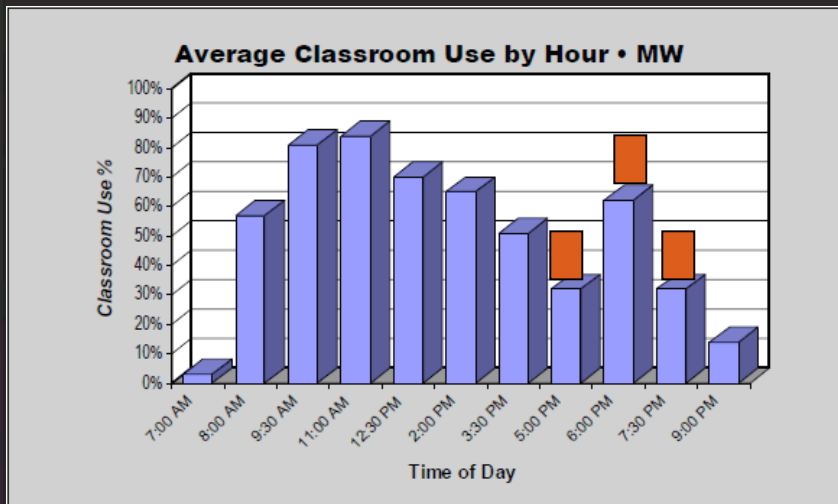
Downtown = to capacity

@ 30 WRH/65% SSO

Main = remainder



Distribution by Day vs. Evening



Fall 2010

- Day
67% CR in use
- Evening
53% CR in use

FUTURE

**DAY Growth =
For-Credit Programs**

**Evening Growth =
Upward Bound
Continuing Ed**

Project Staffing Requirements



COMPARATIVE DATA	FTE Students: FT Instructional Faculty	FTE Students: FT Non- Managerial Staff
AMC F 2008	38.6:1	20.4:1
Ave (USG Two-Yr Col) F 2008	35.0:1	28.2:1
Ave (USG Two-Yr Col + State Col) F 2008	31.7:1	27.6:1
USG F 2008	21.2:1	9.9:1
AMC F 2010	44.8:1	24.1:1
TARGET RATIOS for AMC	35:1	24:1

FACULTY	Head Count	FTE	IPEDS FTE
Full-time Faculty	57	57	57
Part-time Faculty	113	45	38
Total AMC Faculty	170	102	95
Ratio of Students to Faculty	17.6:1	25.0:1	23:1
Proportion of Sections Taught by FT Faculty		56%	
Ratio of FT Faculty to Total Faculty	34%		

USG 2-Yr Col Ave 56.4% 67.6%

Future Staffing Requirements

		Baseline Yr Fall 2010	Future Enrollment Targets			Increase vs Fall 2010
Student Headcount		3,037	5,000	7,500	10,000	229%
	FTE	2,555	4,206	6,310	8,413	229%
	Credit Hours	34,828	57,339	86,009	114,679	229%
Faculty	Headcount	170	227	340	454	
	FTE	102	168	252	337	230%
	Student HC to Faculty HC	17.9	22.0	22.0	22.0	
	Student FTE to Faculty FTE	25.0	25.0	25.0	25.0	
Staff	Headcount	174	272	395	518	
	FTE	153	237	342	448	193%
	Student HC to Staff HC	17.5	18.4	19.0	19.3	
	Student FTE to Staff FTE	16.7	17.7	18.4	18.8	

Residential Facilities

Traditional Doubles

- Large common spaces, shared bathrooms
- 125 to 175 ASF/bed

Suite-style

- Common space, private baths en suite, single or double bedrooms
- 225 to 275 ASF/bed

Apartments & Houses

- Cooking facilities, themes
- 300 to 350 ASF/bed

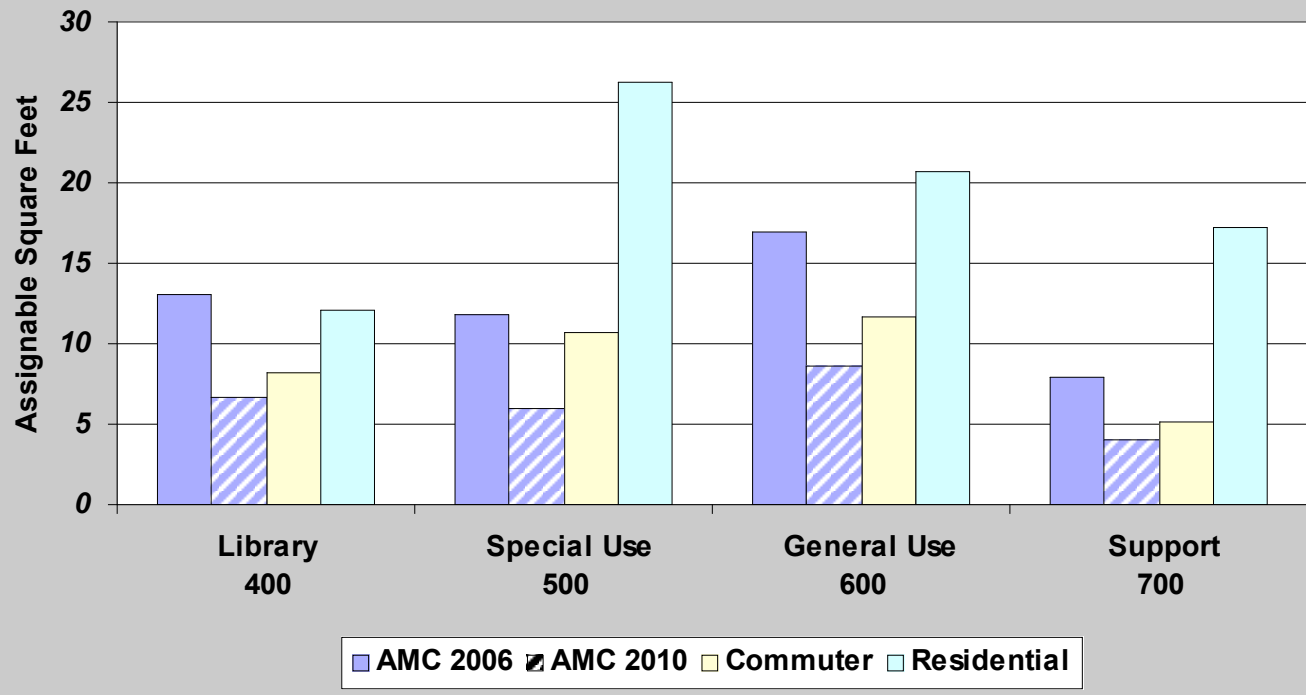
500/1000/1500 beds

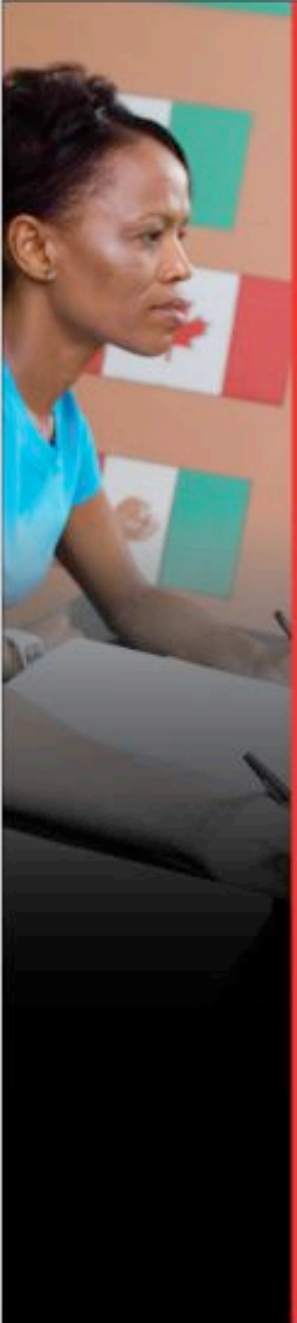


Residential Development - Implications



Space per Student FTE - Fall 2006





Planning Parameters

Fall 2010

TARGET FACULTY RATIOS

45:1

35:1

FTE Student/FT Instruct Faculty

23:1

23:1

IPEDS FTE Stu/FTE Faculty

34%

53%

FT Faculty/Total Faculty HC

56%

71%

Sections taught by FT Faculty

TARGET STAFF RATIOS

24:1

24:1

FTE Student/FT Non-Mang Staff

OTHER OBJECTIVES

15%

Student HC in College Housing

25%

Sections in Computer Classrooms

50%

Increase Outreach to HS Students

Robust Continuing Education

Space Needs as Enrollment Grows

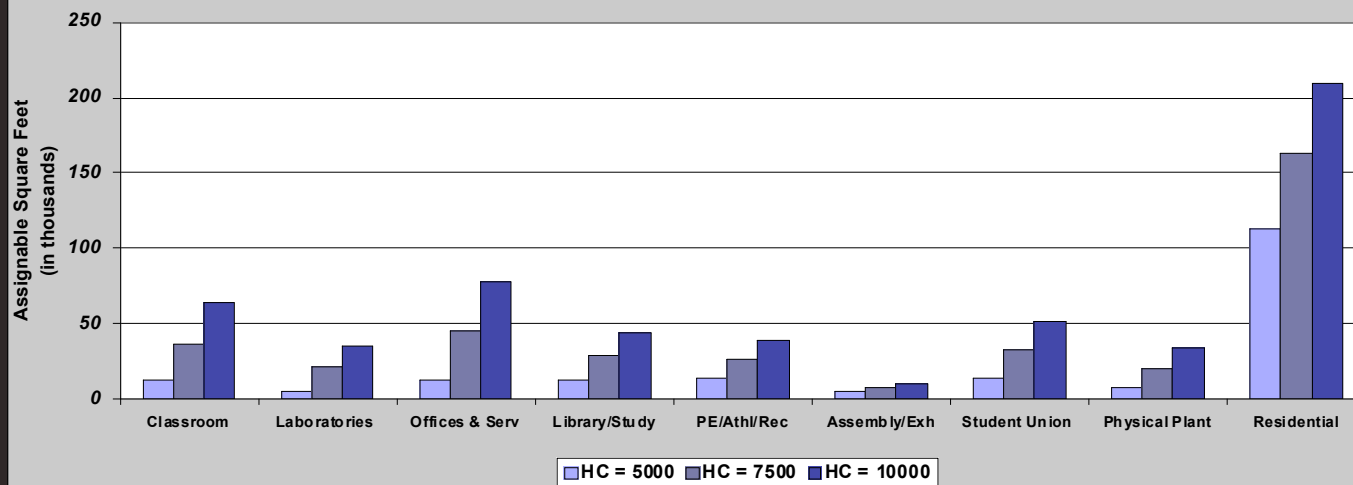
		TARGET 1		TARGET 2		TARGET 3	
		Student HC	5,000	7,500	10,000		
		Student FTE	4,206	6,310	8,413		
		Faculty FTE	168	252	337		
		Staff FTE	237	342	448		
Room Use Code	SPACE TYPE	Projected Assignable Square Ft.	Guideline Assignable Square Ft	Guideline Assignable Square Ft	Guideline Assignable Square Ft		
100	Classroom & Service	41,001	54,806	78,013	104,968		
200	Instructional Labs	31,134	36,393	52,148	66,287		
300	Offices & Office Service	52,069	64,701	97,051	129,401		
400	Library (collection, study, service)	24,496	36,940	52,649	68,285		
500	Special Use Space	26,437	40,397	52,596	64,795		
600	General Use Space	37,025	56,065	77,097	98,129		
700	Support	10,207	14,465	20,478	26,593		
TOTAL NON-RESIDENTIAL SPACE		222,369	303,767	430,031	558,458		
Surplus or (Deficit)			(81,398)	(207,662)	(336,089)		
		Beds		500		1,000	
		1,500					
900	Student Housing		67,500	190,000	353,500		
800	Health Care		1,311	1,732	2,153		
700	Physical Plant to support housing		3,441	9,587	17,783		
TOTAL RESIDENTIAL & SUPPORT SPACE			(72,252)	(201,319)	(373,435)		



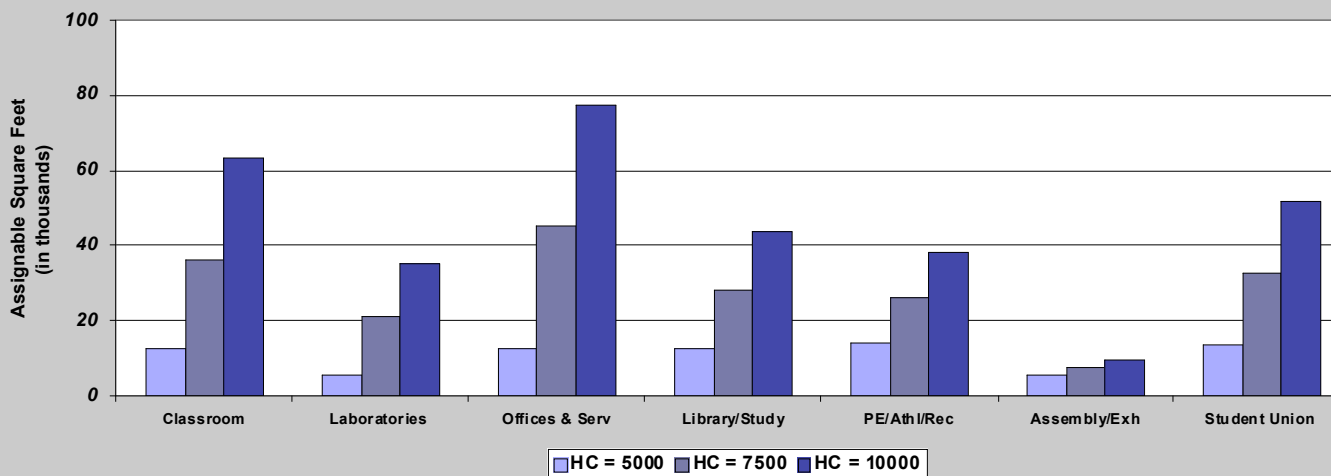
Implications of Enrollment Growth



ADDITIONAL Space Needed as Enrollment Grows



ADDITIONAL Space Needed as Enrollment Grows



Needs for Current & Target Years



	Fail 2010	TARGET	TARGET	TARGET
STUDENT Enrollment	3,037	5,000	7,500	10,000
Existing ASF	165,525			
Net Add in ASF	35,234	81,398	207,662	336,089
Ratio: ASF/GSF	63%	60%	60%	60%
Net Add in GSF	55,927	135,663	346,103	560,148
Parking per HC	0.26	0.35	0.35	0.35
Gross Parking	775	1,750	2,625	3,500
Existing Parking	775	949	949	949
Net Add Parking	0	801	1,676	2,551
Recreation per HC	87	87	87	87
Recreation Net SF	264,219	435,000	652,500	870,000
Recreation Gross (1.2)	317,063	522,000	783,000	1,044,000
Existing Recreation	178,596			
Net Add Recreation	138,467	343,404	604,404	865,404
Proportion in Housing	0%	10%	13%	15%
Beds	0	500	1,000	1,500
Parking per Bed	1	1	1	1
Parking for Residents	0	500	1,000	1,500

Acreage Needs for Current & Target Years



ACREAGE per PHASE

STUDENT Enrollment

Fall 2010
3,037

TARGET
5,000

TARGET
7,500

TARGET
10,000

Net Add Academic + Parking

0.0

7.0

15.2

23.3

Existing
Work In Progress

14.3

17.6

17.6

17.6

Net Add Recreation

3.3

8.0

14.0

20.0

Existing
Work In Progress

4.1

3.5

3.5

3.5

Net Add Housing - incl. Parking

0.0

12.5

25.0

37.5

Existing

0.0

0.0

0.0

0.0

Total Net Add Need + WIP

21.7

48.6

75.2

101.9

Existing Developed
Work In Progress

18.4

21.1

21.1

21.1

DEFICIT

3.3

27.5

54.1

80.8

Existing undeveloped
Undeveloped with Work In Progress

72% 47.0

68% 44.3

68% 44.3

68% 44.3

Total SITE

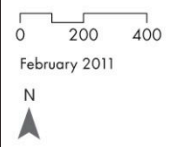
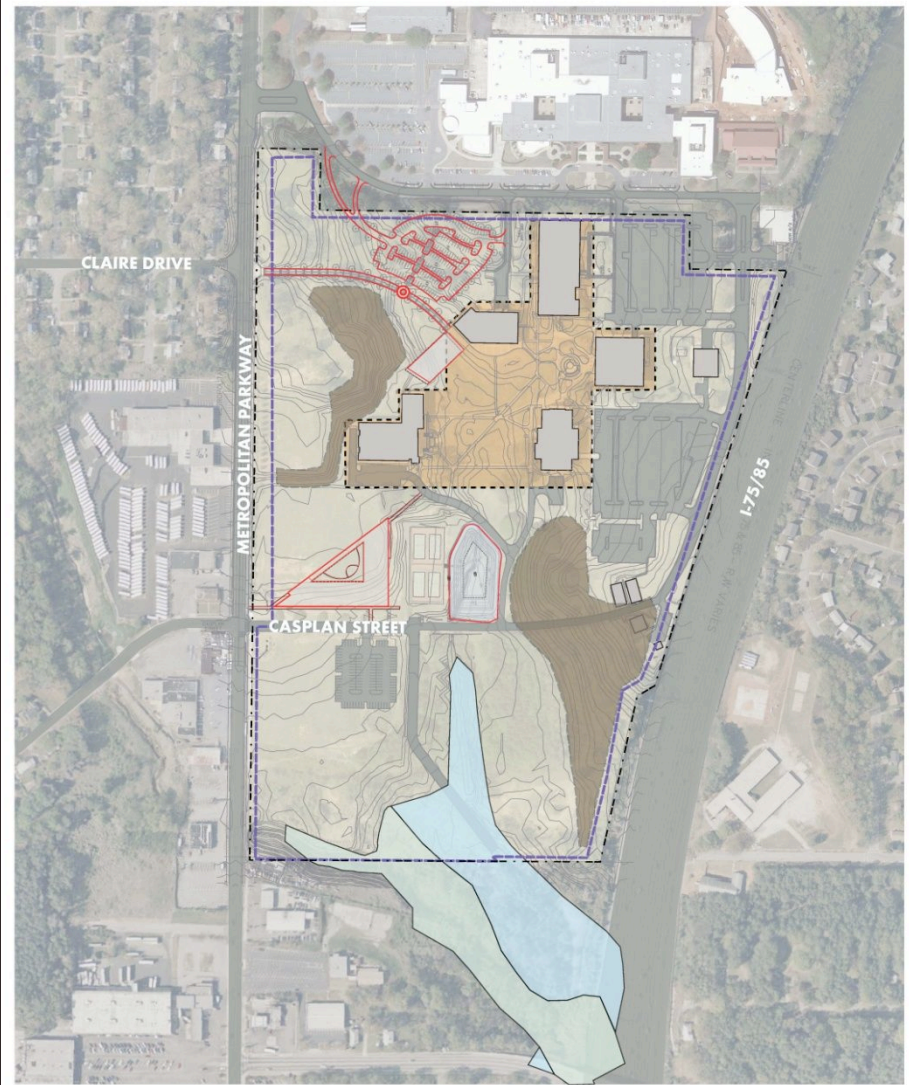
65.4

65.4

65.4

65.4

SITE CONSTRAINTS



- Legend**
- Work in Progress
 - Steep Slope
 - 100- Year Flood Plain
 - 500- Year Flood Plain
 - Academic Core/ Buried Utilities
 - Se

AMC Site Constraints
Atlanta Metropolitan College
Campus Master Plan





CAMPUS CAPACITY

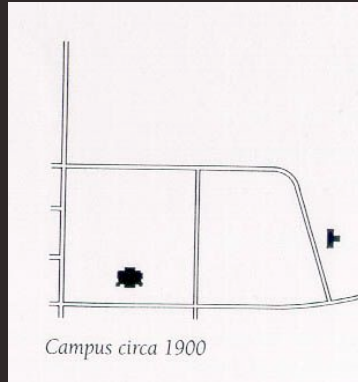
Character of AMC



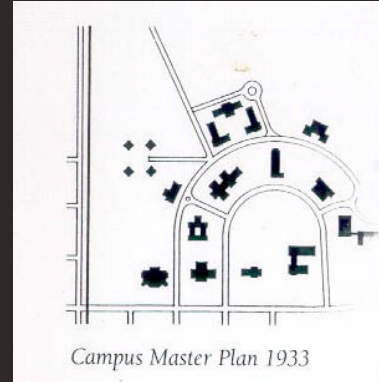
Higher Density Campus



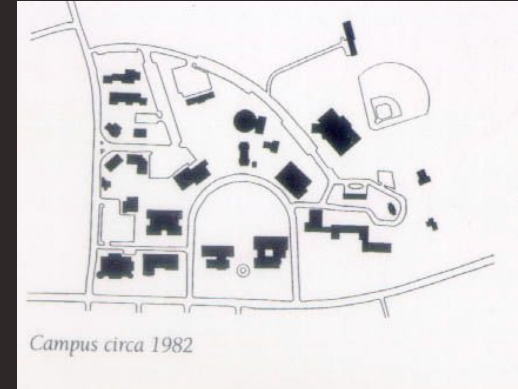
Campus Evolution



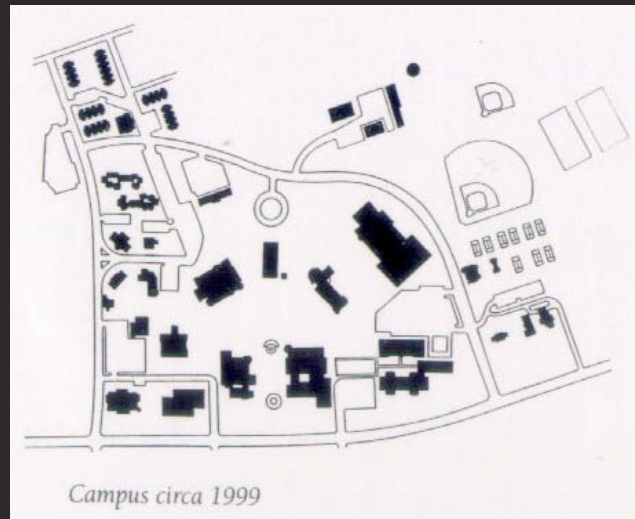
Campus circa 1900



Campus Master Plan 1933



Campus circa 1982



Campus circa 1999



INTERACTIVE CAPACITY STUDY

END

Interior

